

# System introduction

---

## PASSENGER ENTERTAINMENT

The basic components for passenger entertainment are described in the Owner's Handbook. This book describes the operation of the available optional features for Range Rover, Range Rover Sport and LR4;

- DVD at the front screen
- RSE (Rear Seat Entertainment)
- Remote control operation - Range Rover only
- Infra-red headphones - Range Rover only
- Auxiliary and portable audio connections

### WARNING

**The passenger entertainment system should be used only when it is safe to do so. Do not use if it is likely to cause driver distraction. Driver distraction can lead to accidents causing serious injury or death.**

**Caution: Always run the engine during prolonged use of the audio or RSE system. Otherwise the vehicle battery may become discharged.**

### DVD selection

DVD programmes can be viewed on the front screen while the vehicle is stationary. The park brake must be engaged and Neutral selected. Alternatively set the transmission in Park position. As soon as one of these conditions change the view will revert to a non DVD screen. A speed inhibit feature will disable the DVD preview display at a factory set speed.

### Rear seat entertainment

The basic components consist of;

- Radio
- CD
- DVD

- AUX
- AV1 and AV2 external sources

Further options can include;

- Portable audio(USB)
- Satellite radio
- HD radio

Overall control of the rear entertainment system is from the front screen. The remote control and each rear screen is turned on via the **Rear entertainment Supervisor** screen. This allows the driver or front seat passenger to censor DVD viewing and control volume level.

### WARNING

**The driver should make adjustments only when it is safe to do so. Driver distraction can lead to accidents causing serious injury or death.**

### Remote control RSE

There are two video display screens mounted in the rear of the front seat head restraints. Separate display modes can be selected with the remote control. The remote control has a switch to select left and right hand screens. All screen settings are adjusted with the remote control.

### Audio control unit for Range Rover Sport and LR4 RSE

All audio control is made from the headphone module panels on the rear doors.

# System introduction

---

## **Headphones for the RSE**

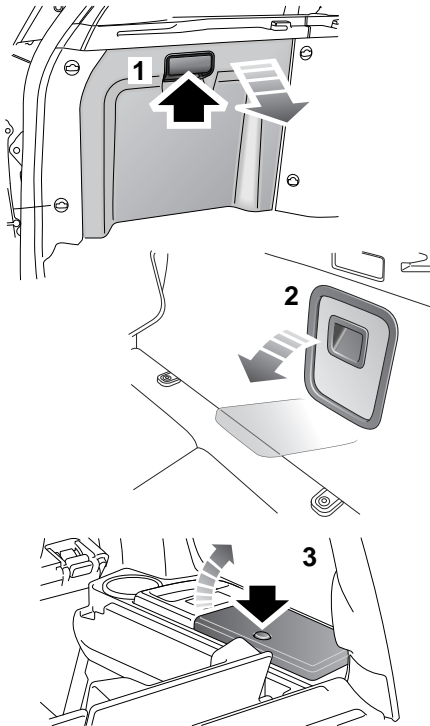
Audio for the RSE can be delivered to the user via headphones. Range Rover is supplied with two pairs of infra red (cordless) headphones. Channel setting and volume is controlled from the headphones. Range Rover Sport and LR4 are fitted with control modules on the rear doors. Standard corded headphones can be connected to the 3.5mm headphone jack.

## **Auxiliary and portable audio**

Input points are supplied for AV1, AV2 and AUX devices and also portable audio devices such as USB, iPod and music players.

# Loading a DVD

## ACCESSING THE PLAYER



LAN1305

The DVD player will play 12 cm DVDs, Video CDs (VCDs) and audio CDs.

**Note:** Video CDs will have less options available from their menus.



E89295



The DVD player is not compatible with High Definition DVD discs, DVD-ROMs, DVD-RAMs, Photo CDs, MP3s or DVD plus discs.

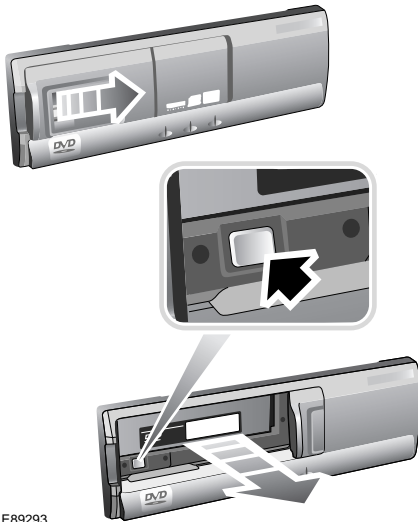
With all Land Rover models the DVD player is located in the luggage area:

1. Range Rover - left-hand side.
2. Range Rover Sport - right-hand side.
3. LR4 - right-hand side.

# Loading a DVD

---

## LOADING THE PLAYER



E89293

1. To access the disc cassette slide the door open and press the eject button.
2. Load a disc into the cassette with the label side facing upwards.
3. Insert the cassette into the DVD player.
4. Close the sliding door.

**Caution: Do not leave the DVD player door in the open position. The ingress of dirt or moisture can reduce DVD playback quality, and may result in damage to the player.**

**Do not place any device/object that emits a magnetic field near to the DVD player.**

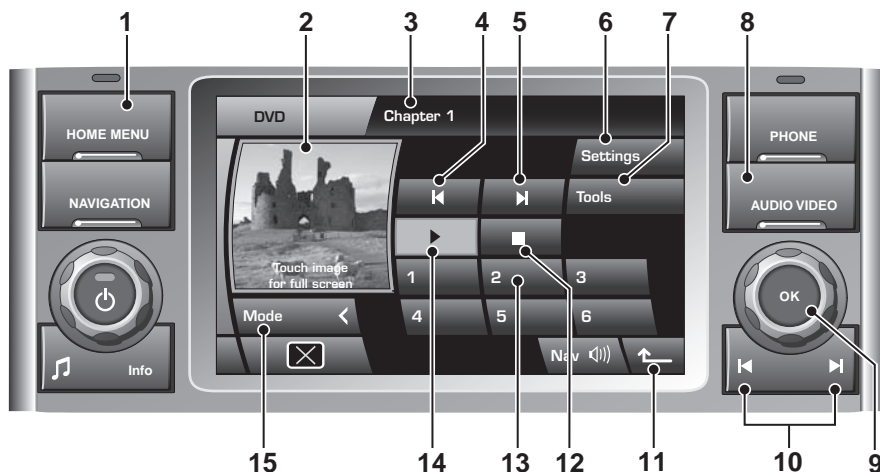
**Do not insert any object other than the recommended discs into the DVD player for any reason.**

**Ensure that the discs are clean and dust free before inserting into the player.**

**Note:** This product incorporates copyright protection technology that is protected by method claims of certain U.S. patents and other intellectual property rights owned by Macrovision Corporation and other rights owners. Use of this copyright protection technology must be authorised by Macrovision Corporation, and is intended for home and other limited viewing uses only unless otherwise authorised by Macrovision Corporation. Reverse engineering or disassembly is prohibited.

# Touch screen use

## DVD CONTROLS - Range Rover



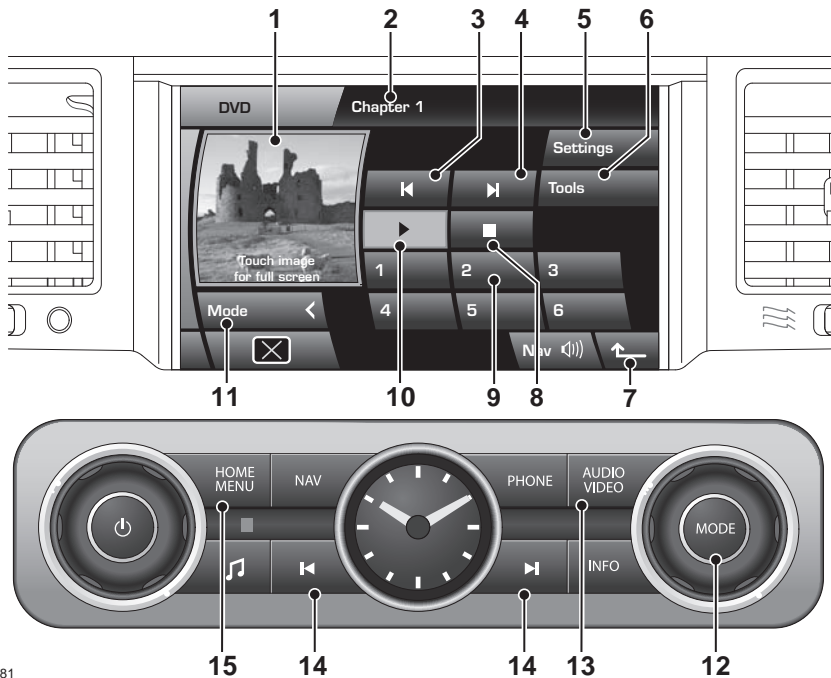
LAN2312

**Note:** *Hardkeys are the permanent physical controls on the audio unit. Softkeys are those displayed on the touch screen.*

1. **HOME MENU** hardkey. Press to return to the main **Home Menu** screen.
2. Preview picture area. Not available when vehicle is in motion.
3. Message area.
4. Backwards/Previous softkey.
5. Forwards/Next softkey.
6. **Settings** softkey. Touch to access DVD format screen.
7. **Tools** softkey. Touch to access DVD programme control screen.
8. **AUDIO VIDEO** hardkey. Press to access the main DVD control menu.
9. **OK** rotary control. Press to view alternative audio sources then rotate to select a source.
10. Backwards and forwards hardkeys.
11. Return to previous screen softkey.
12. Stop DVD programme.
13. Numeric softkeys. For DVDs loaded into changer unit.
14. Play DVD programme.
15. **Mode** softkey.

# Touch screen use

## DVD CONTROLS - Range Rover Sport and LR4



LAN2581

**Note:** Hardkeys are the permanent physical controls on the audio unit. Softkeys are those displayed on the touch screen.

1. Preview picture area. Not available when vehicle is in motion.
2. Message area.
3. Backwards/Previous softkey.
4. Forwards/Next softkey.
5. **Settings** softkey. Touch to access DVD format screen.
6. **Tools** softkey. Touch to access DVD programme control screen.
7. Return to previous screen softkey.
8. Stop DVD programme.
9. Numeric softkeys. For DVDs loaded into changer unit.
10. Play DVD programme.
11. **Mode** softkey. Touch to toggle between DVD.
12. **MODE** rotary control. Press to view alternative audio sources then rotate to select a source.
13. **AUDIO VIDEO** hardkey. Press to access the main DVD control menu.
14. Backwards and forwards hardkeys.
15. **HOME MENU** hardkey. Press to return to the main **Home Menu** screen.

# Touch screen use

## DVD MENU SELECTION

There are three methods for selecting DVD mode.

Access via the **AUDIO VIDEO** hardkey.

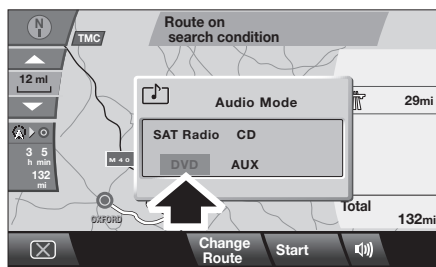
1. While in another viewing mode, e.g. Navigation, press the hardkey for direct access to the Audio Video control menu.
2. Select the **DVD** softkey. If a selection is not made within five seconds, the left side selection softkeys will be replaced with a **Mode** softkey. This allows for a larger preview area to be displayed. If a non DVD control menu is displayed, touch the **Mode** softkey to return to the previous menu then select **DVD**.

Access via the **Home Menu** screen.

1. Press the **HOME MENU** hardkey.
2. Touch the **Audio Video** softkey to access the audio/video menu.
3. As in the first access method, select DVD with the **DVD** softkey.

Range Rover only - Access while in another mode e.g. Navigation.

1. Press the **OK** rotary control to display a pop up mode menu.



2. Turn the rotary control to select **DVD** then press the control to confirm.

Each of the above access methods will bring you to the DVD control menu.

## ALTERNATIVE AUDIO SOURCE

While already listening to an audio source, an alternative audio source can be selected if required, e.g., DVD.

Press the **OK** or **MODE** rotary control to display alternative audio sources then rotate to select DVD. After two seconds the DVD source will play. The screen view will remain unaffected.

## PLAYING A DVD

### Select and play a disc



1. Touch the numeric softkey that the required disc is loaded to. The disc menu will display in the preview area.
2. Touch the start DVD programme softkey.

While the DVD is playing, a long touch of the start DVD softkey will initiate slow motion play. Touch the same softkey again to return to normal speed play.

### Pause and stop a disc

To pause DVD play touch the stop DVD programme softkey once. To resume play from the point where pause was requested, touch the play softkey.

# Touch screen use

To stop DVD play touch the stop DVD programme softkey twice. The DVD programme will return to its start point.

The current state will be displayed along the bottom of the preview screen.

## Forward and backward movement

While a DVD is playing, play can be moved forward or back a chapter or fast forward/backward to a particular point with the forwards/backwards softkeys or the hardkeys below the right side rotary control.

To move to a next chapter, touch the required softkey or hardkey once.

A long touch or press will move rapidly through the DVD programme at X16 speed.

The current state of movement will be displayed along the top of the preview screen.

## DVD SPECIAL FEATURES

Touch the **Tools** softkey to enter the special features screen.



### Menu (DVD changer)

DVD play must be stopped before this menu will display. A long touch of the **Menu** softkey will display the DVD changer menu.

Use the direction softkeys plus **Return** and **Enter** to modify the DVD changer menu.

## GOTO

When a DVD has title, chapter and time information, it can be accessed by touching the **GOTO** softkey. Repeated presses of the **GOTO** softkey will scroll through the available information pages.

Use **GOTO** to access a point within the DVD programme, e.g., select Chapter to display a chapter selection pop up. Enter a chapter number (+10 and 6 = chapter 16) then touch the **ENTER** softkey.

A long touch of the **GOTO** softkey will display the DVD status information.

A second long press will display the previous screen.

## Subtitles

Touch the softkey to toggle through the available subtitle options. Subtitles will be displayed along the bottom of the screen.

To turn subtitles off apply a long touch of the **Subtitles** softkey.

## Angle

Some DVD programmes offer alternative viewing angles in selected scenes. Touch the softkey to toggle through the available options.

## Audio

Some DVD programmes have an alternative or extra sound feature such as a commentary. Touch the softkey to toggle through the available options.

## DVD FORMATS AND SCREEN SETTINGS

The recorded signal format will be either NTSC or PAL.

**NTSC** (National Television System Committee) is the format used in North America.



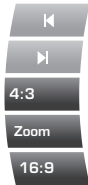
# Touch screen use

---

**PAL** (Phase Alternating Line) format is used in the United Kingdom and other countries around the world.

To change the format, touch the **Settings** softkey. Select the alternative format. After five seconds the screen will return to normal view.

## Screen appearance



LAN2298

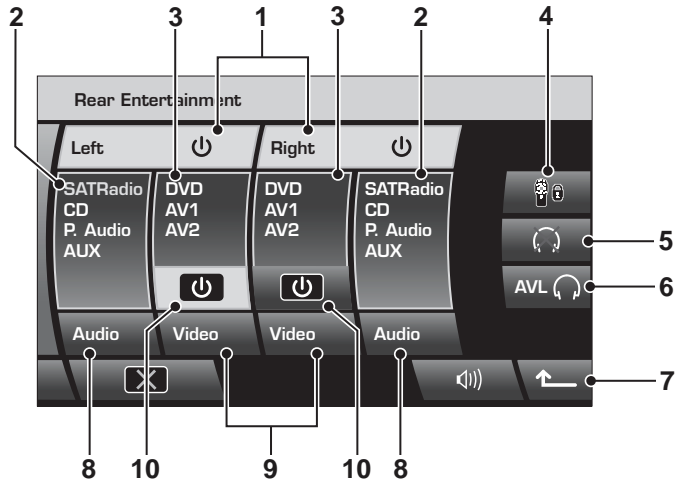
When moving from preview to full screen size, picture format softkeys, 4:3, Zoom and 16:9, will be displayed for five seconds.

Use these softkeys to alter the screen aspect ratio to suit your video media.

- 4:3 - Commonly used for TV.
- ZOOM - Similar to ratio used for films produced for cinema release.
- 16:9 - Widescreen.

# Rear seat entertainment

## SUPERVISOR SCREEN



LAN2693

1. **Left** and **Right** on/off softkeys
2. Audio source displays
3. Video source displays
4. RSE lockout softkey
5. Headphones mute softkey
6. **AVL** - Headphones volume limiter softkey

7. Return to previous screen softkey
8. **Audio** source selector softkeys
9. **Video** source selector softkeys
10. Video on/off softkeys

**Note:** The illustration shows all intended audio and video options.

# Rear seat entertainment

---

## RSE INTRODUCTION

The RSE system consists of two screens. Separate programmes can be viewed or heard by rear seat occupants. Supervisory control is made from the front seats. Audio and video programmes for each or both sides of the RSE can be controlled from the Supervisor screen. The RSE remote control can be locked out, headphones can be muted and a volume limit can be set for the headphones.

## SWITCHING RSE ON

To switch on a rear screen;

1. From the **Home Menu**, touch the **Rear Seat Entertainment** softkey.
2. From the Supervisor screen, touch the **Left** or **Right** or both softkeys.

**Note:** When a rear screen is turned on the last used audio or video source for that screen will play. If that source is a DVD then it will resume play at the point it was left at previous system turn off.

**Caution:** Children should be supervised at all times and view/listen to only media suitable for their age group.

To switch off a rear screen completely, touch the appropriate **Left** or **Right** softkey again.

To switch off only the video source to a rear screen, touch the appropriate **Video** on/off softkey. The screen will remain backlit ready to display information and messages. Touch the same softkey to turn the screen on again.

## RSE CONTROL FROM THE SUPERVISOR SCREEN

When the Supervisor screen is displayed the RSE remote control will be locked out. No part of the RSE will operate until it is turned on at the Supervisor screen.

### Selecting an audio source

The Supervisor screen will display a choice of audio sources: **Radio**, **HD radio (or Satellite radio)**, **CD**, **P.Audio** and **AUX**.

To select an audio source;

1. Touch an **Audio** softkey repeatedly until the highlight moves to the audio type you require.
2. After two seconds without any further softkey selections the selected audio source will play and the highlight box will change to amber.

**Note:** When watching a video source an alternative audio source can be selected.

### Selecting a video source

The Supervisor screen will display a choice of video sources: **DVD**, **AV1** and **AV2**.

To select a video source;

1. Touch a **Video** softkey repeatedly until the highlight moves to the video type you require.
2. After two seconds without any further softkey selections the selected video source will play and the highlight box will change to amber.

**Note:** When a new video source is selected the audio source will always be synchronised. However, if an alternative audio source is subsequently selected, synchronisation can be achieved again with a long touch of the relevant **Audio** softkey.

# Rear seat entertainment

## Remote control lockout

The RSE remote control can be locked out to prevent selections being made.

Touch the RSE lockout softkey. The softkey will highlight. Touch again to reinstate the remote control.

**Note:** After an ignition cycle and door lock, the RSE lockout softkey defaults to the off state.

## HEADPHONES

When an audio source is selected from the main audio system and played through the cabin speakers, the RSE headphones have no control over the volume level.

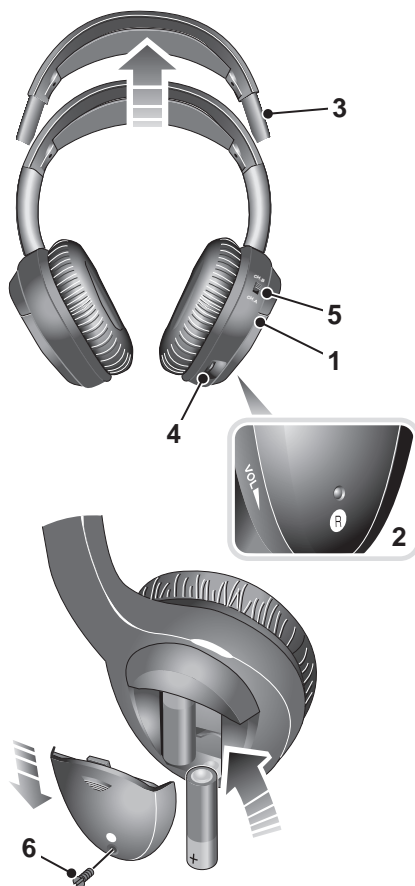
All headphones can be muted with a touch of the headphones mute softkey. Touch again to reinstate previous volume.

Touching the **AVL** softkey will limit volume of the headphones to 27 decibels. Touch again to reinstate headphones volume control.

### WARNING

**Always store headphones safely when not in use. Do not leave them unsecured as they may cause injury in the event of sudden braking or an impact.**

## Range Rover infra red headphones



LAN2833

1. **POWER ON-OFF** button
2. **POWER** indicator
3. Headband adjuster
4. **VOL** volume control
5. **CH.A** and **CH.B** channel selectors for left and right screens
6. Battery cover fixing.

## Rear seat entertainment

---

**Note:** *These infra red headphones are not designed for use by a front seat occupant or outside the vehicle.*

### Using the headphones

Press the **POWER ON-OFF** button. The **POWER** indicator will illuminate.

To adjust the headphones for fit, hold an earpiece and pull out the headband with a smooth action. Do not use excessive force.

Select the appropriate channel to match the left or right screen. **CH.A** is for the left screen and **CH.B** is for the right screen.

Adjust the volume to suit.

**Note:** *The earpiece exteriors must remain exposed to the infra red transmitter in the overhead console. Any barrier will prevent them from working correctly.*

When the two AAA batteries require replacement the sound quality and volume will be compromised. Remove the battery cover fixing and slide out the cover. Change both batteries with new ones. Refit the cover.

### WARNING

**Used batteries must be disposed of correctly as they contain a number of harmful substances. Seek advice on disposal from your Dealer/Authorised Repairer and/or your local authority.**

---

### Range Rover Sport and LR4 headphones

Standard corded headphones can be used. These are not supplied with the vehicle.

The connection point for headphones with a 3.5mm jack connector is at the front of the module, located ahead of the rear window switch.

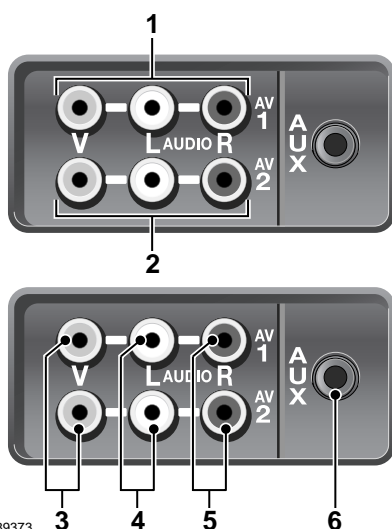
**Note:** *Only headphones compatible with a 3.5 mm jack plug socket can be used. To obtain optimum sound quality use headphones with an impedance of 32 ohms.*

# Rear seat entertainment

## AUXILIARY CONNECTIONS

Rear seat passengers may wish to use such devices as USB, games consoles, personal audio/ video players, or playback camcorder video.

The two auxiliary input points **AV1** and **AV2** allow for separate external devices to be used by the left and right rear seat passengers, or one device can be used by both rear seat passengers.



E89373

1. AV1. For left side.
2. AV2. For right side.
3. Video input - Yellow.
4. Audio input - White. Left channel.
5. Audio input - Red. Right channel.
6. AUX socket for 3.5mm jack plug.

To play an audio source connect the White lead for mono or the White and Red leads for stereo. For a video source connect the Yellow lead.

**Note:** Video signals will be displayed only on the Video Display Screens mounted in the front seat headrests.

**AUX** (Auxiliary Input) mode allows additional equipment to be connected to the vehicle's audio system. Items such as a personal stereo, MP3 player, iPod, hand-held navigation unit etc. can be plugged in to the vehicle's audio system.

**Note:** iPod Shuffle is supported when connected via the Auxiliary Input connector.

USB connection points are at the front of the vehicle.

## WARNING

Loose objects within the passenger compartment can cause death or injury in the event of an accident or sudden braking. Ensure that all auxiliary input devices are securely fixed in position.

**Caution:** Auxiliary input devices may generate heat whilst operating. Do not place devices on the vehicles upholstery or carpets.

Ensure that any auxiliary input devices are suitable for use within a vehicle before using them.

Any auxiliary input devices that are used will require their own power source or a suitable adapter to use power from your vehicle.

Power supplies, transformers, adapter leads etc. should be fitted professionally to ensure safe operation and avoid damage to the vehicle electrical system.

Auxiliary input devices are not intended for driver use. Do not use if they are likely to cause driver distraction.

# Remote control

## CONTROL FEATURES

### Front view

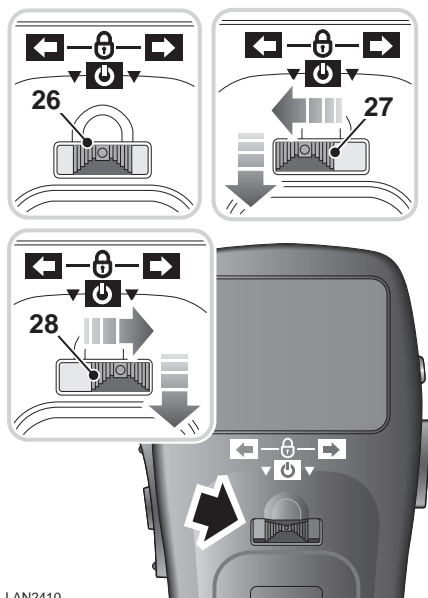


1. RSE on/off. Long press to toggle between NTSC and PAL video format.
2. Press to increase the set level.
3. DVD suspend play. Press again to end DVD play.
4. Menu select. Press repeatedly to view the setup choices.
5. DVD menu display.
6. Press to decrease the set level.
7. DVD menu control. Move left, right, up, or down the menu. Press to confirm selection.
8. Press to return to the previous CD or DVD menu.
9. Press to change video mode. DVD, AV1 and AV2.
10. Radio/CD next available station/next track. Long press to search through CD track.
11. Radio/CD next preset station/next CD. Long press to scroll through wave bands.
12. Radio/HD radio/CD/USB/RSE audio selector. Long press for AUX selection.
13. Numeric keypad. Press to select DVD chapters or CD tracks.
14. Not used.
15. Not used.
16. Press to illuminate controls.
17. DVD play.
18. DVD next disc up.
19. DVD seek forward plus fast forward.
20. DVD next disc down.
21. DVD seek backward plus fast backward.
22. GOTO chapter selection and DVD status.
23. Access DVD audio options.
24. Access DVD viewing angle options.
25. Access DVD subtitle options.

LAN2409

# Remote control

## Back view



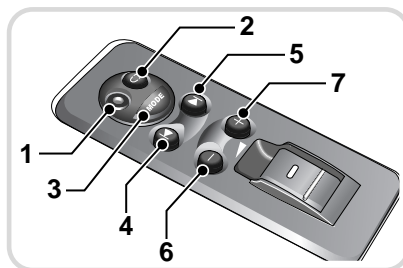
LAN2410

- 26. Central position - remote control locked.
- 27. Remote commands for right screen. Press to turn the right screen on/off.
- 28. Remote commands for left screen. Press to turn the left screen on/off.

**Note:** Only the video image is turned on/off. The audio signal continues unless another source is selected.

## AUDIO CONTROL FEATURES - Range Rover Sport and LR4

The audio control features are located ahead of the rear window switch. All audio control is made through this module. Video control is made via the remote control.



- 1. 3.5 mm headphone jack.
- 2. Radio pre-set and Disc select.  
During radio play a short press will select the next pre-set radio station. A long press will change the frequency band (AM, FM, etc.). During audio CD play a short press will select the next disc.
- 3. Mode control.  
Press to toggle between radio, CD and RSE. A long press will select AUX. Press again to return to the previously selected mode.
- Note:** RSE must be selected before the remote control has any effect.
- 4. Seek down.  
During radio play press to seek down to the next available station with good signal strength.  
During audio CD play a short press will return to the beginning of the current track. Press again to skip back to the previous track.  
A long press will search back through the current track until the button is released.



# Remote control

5. Seek up.  
During radio play press to seek up to the next available station with good signal strength.  
During CD play press to skip forward to the beginning of the next track.  
A long press will search forward through the current track until the button is released.
6. Volume decrease.  
Press to lower the headphone volume level.
7. Volume increase.  
Press to increase the headphone volume level.

**Note:** When the headphones are not connected the buttons remain operational. This means that it is still possible to select CD, for example, whilst the radio is playing through the cabin speakers. The audio CD unit will remain operational until the mode control is pressed to select another mode. If the starter key is removed for longer than one minute, AUX mode will be selected automatically when the starter switch is next turned on.

## ON-SCREEN INFORMATION



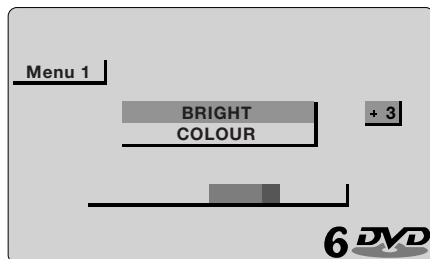
LAN2694

1. CD and DVD feedback and information.
2. Invalid command messages and audio channel information.
3. CD and DVD feedback and information.

# Remote control

## RSE SCREEN SETTINGS

Press button **4** to access the first setting option. Pressing the button repeatedly will scroll through further options.



E89187

While the required option is highlighted the level can be adjusted. Use buttons **2** and **6** to adjust the set level up or down.

Options where levels can be adjusted include:

- BRIGHT (screen brightness)
- COLOR (screen color)
- DIMMER (AUTO, DAY and NIGHT)  
DAY is the brightest setting. NIGHT is the lowest setting.
- DIMMER LEVEL (Fine tune DAY and NIGHT settings)

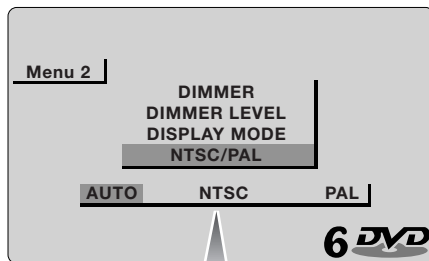
A fifth press of button **4** will access **DISPLAY MODE**. The screen aspect ratio can be adjusted to suit the video media being viewed.

Aspect ratios include:

- 16:9 (Widescreen)
- 4:3 (Commonly used for TV)
- CINEMA (Used for films produced for cinema release)
- ZOOM (Slightly wider than CINEMA setting)

## Video signal format

When the video format option is highlighted it is recommended that AUTO is selected. This allows the system to determine the correct video format.



E89192

**NTSC** (National Television System Committee) is the format used in North America.

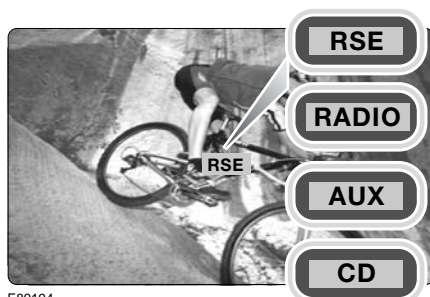
**PAL** (Phase Alternating Line) format is used in other countries around the world.

## Reset to defaults

This screen gives the option of resetting display settings. All on screen display settings will revert to their default settings.

# Remote control

## RSE AUDIO SOURCE SELECTION



E89194

To select an audio source press button **12**. Press repeatedly to scroll through the available audio sources. When the required source is highlighted play will commence. A long press will select **AUX** mode.

**Note:** If you want to listen to the soundtrack of a video source such as a DVD, select **RSE**. The soundtrack can then be listened to with or without the video being displayed.

### Radio play

With radio selected as the audio source, press button **10** to seek up to the next available station. Alternatively, press button **11** to move to the next pre-set station. A long press of button **11** will scroll through and select a radio band.

### CD play

With CD selected as the audio source, press button **10** to skip forward to the next available track. A long press of button **10** will search forward through the track. Alternatively, press button **11** to move to the next CD.

### USB

Use buttons **10** and **11** as for CD play.

## RSE VIDEO SOURCE SELECTION

To select a video source press button **9**. Press repeatedly to scroll through the available video sources.

### DVD play

To start DVD play press button **17**. Press button **3** to pause play. Press **3** again to end play.

To move to the next available disc press button **18**. To move back to the previous disc press button **20**.

To seek forward press button **19** and to seek backward press button **21**. For fast operation at x16 speed, press and hold.

Some discs allow DVD playback to be started at specified points. To start from a certain chapter for example, access the DVD menu by pressing button **5**. The menu will display any available choices for start point etc.

**Note:** The features available from the DVD menu will vary according to the discs inserted. Please refer to the instructions supplied on screen for more information.

If an attempt is made to enter a command that is either not available on the disc currently playing, or a command which is available but not at that time, a no entry symbol will appear in the top right corner of the display screen.



E89198

# Remote control

Some DVD discs are recorded with additional features that allow subtitles to be displayed, camera angle to be changed and audio choices to be made. If these features are available they can be accessed using the DVD menu button **5** and then making the choices/adjustments as required.

Alternatively, the dedicated feature buttons camera angle **24**, subtitle **25** and audio **23**, can be pressed to access the relevant feature.

## DVD audio

Most DVD discs have a selection of audio effects available. These are accessed by pressing button **23** to scroll through the selections. The selections appear as **AUDIO 1** & **AUDIO 2**.



E89199

The Main touchscreen in the front of the vehicle will display an icon to indicate the audio system in operation.

## DVD region codes

Most DVD discs are coded, allowing them to play only in the region in which they are sold. Some are coded to allow play in any region. Consult the information/packaging of your DVD to check for region coding.

**Note:** The DVD player fitted to your vehicle will only play discs marked with the region code for the area in which your vehicle was purchased, or discs coded for all regions.

Use the table below to identify the region code that applies to your area.

Region Code	Regions
<b>0</b>	All regions
<b>1</b>	USA, US Territories, and Canada
<b>2</b>	Japan, Europe, South Africa, Middle east
<b>3</b>	Southeast Asia, East Asia (Inc. Hong Kong)
<b>4</b>	Australia, New Zealand, Pacific Islands, Central America, Mexico, South America, Caribbean
<b>5</b>	India, Africa, Russia and former USSR countries
<b>6</b>	China
<b>7</b>	Reserved
<b>8</b>	Special International Venues (Airlines, Cruise Ships etc.)
<b>9</b>	Region Free

If a DVD with an incorrect region code is inserted into the DVD player, the message **REGION CODE VIOLATION** will be displayed on the video screens.

# Index

---

## A

Accessing the player .....	6
Alternative audio source .....	10
Audio control features - Range Rover Sport and LR4 .....	19
AUX socket .....	17
Auxiliary connections .....	17
AV1 and AV2 .....	17

## D

DVD audio options .....	11
DVD changer menu .....	11
DVD controls .....	8, 9
DVD formats and screen settings .....	11
DVD GOTO .....	11
DVD menu selection .....	10
DVD play .....	10
DVD player location .....	6
DVD region codes .....	23
DVD special features .....	11
DVD subtitles .....	11
DVD viewing angle .....	11
DVD/CD loading .....	7

## H

Headphones - corded .....	16
Headphones - infra red .....	15

## L

Loading the player .....	7
--------------------------	---

## N

NTSC format .....	11
-------------------	----

## P

PAL format .....	11
Passenger entertainment introduction. ....	4
Picture format .....	12

## R

Remote control features .....	18
RSE audio source selection .....	22
RSE components .....	4
RSE control .....	14
RSE DVD play .....	22
RSE headphones .....	15
RSE introduction .....	14
RSE on screen information .....	20
RSE radio play .....	22
RSE remote control features .....	18
RSE remote control lockout .....	15
RSE screen settings .....	21
RSE selection of a video source .....	14
RSE selection of an audio source .....	14
RSE supervisor controls .....	13
RSE switching on .....	14
RSE video format .....	21
RSE video source selection .....	22

## S

Selecting RSE DVD play .....	22
Selecting RSE radio play .....	22
Selecting the DVD menu .....	10
System introduction .....	4

## U

Using the Range Rover Sport and LR4 audio control .....	19
Using the remote control .....	18