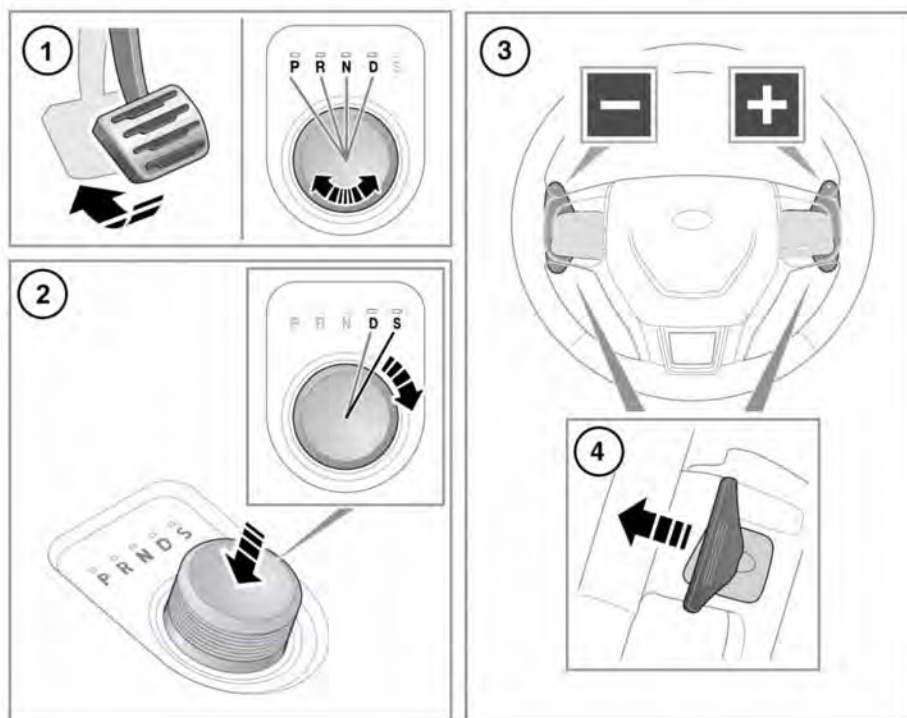


## AUTOMATIC TRANSMISSION



The gear selection status of the rotary gear selector and the steering wheel's gear selector paddles (Commandshift), will be displayed in the Message centre.

When the engine starts, the rotary gear selector elevates from its lowered, stowed position and the gearbox engages in Park (P).

1. To select Drive (D), Neutral (N), Reverse (R) or P, press the brake pedal and then rotate the rotary gear selector to the required position. The relevant LED indicator lamp, by the gear selector, will illuminate to confirm selection.

While in D, gear changing is fully automatic. Gear change shift points are determined by the position of the accelerator pedal and the vehicle's current speed.

To achieve rapid acceleration (kick-down) while in **D**, quickly press the accelerator pedal to its full travel. When the accelerator pedal is relaxed, normal automatic gear changing resumes.

**Note:** If pressure is applied to the gear selector before the brake pedal is pressed, the selected gear may not be available. In this situation, remove pressure from the gear selector, make sure that the brake pedal is pressed and then select the required gear again.

2. To select Sport (**S**) mode from **D**, press the gear selector down and rotate to **S**. The relevant LED indicator lamp, by the gear selector, will illuminate to confirm selection.

The transmission will stay in the lower gears for longer, improving mid-range performance.

To deselect **S** mode, rotate the gear selector back to **D**.

**Note:** Before selecting **D**, **R**, **N** or **P**, make sure that the vehicle is stationary and the brakes are applied.

3. Commandshift gear selector paddles: Allow manual gear selection, while the selector is in either the **D** or **S** positions. Lightly pull the left paddle for downshifts or lightly pull the right paddle for upshifts.

Commandshift can be effective when rapid acceleration and engine braking are required.

A gear shift indicator warning lamp will illuminate briefly at the recommended (upshift) gear change point. See **63, GEAR SHIFT (GREEN)**.

**Note:** If continued use of the Commandshift gear selector paddles is required, select **S**.

**Note:** The gear shift paddles can be configured to be active in both **D** and **S**, or active in **S** only, via the vehicle settings/set-up. See **56, INSTRUMENT PANEL MENU**.

4. To manually change gear, briefly pull the relevant steering wheel gear shift paddle.  
To exit manual gear selection mode, either pull and hold the upshift paddle for approximately one second (to return directly to automatic operation in **D** or **S**) or, if in **S**, rotate the rotary gear selector to the **D** position.



**To avoid injury, before exiting the vehicle, always make sure that the rotary gear selector is in the P position, the engine is switched off, the Electric Parking Brake (EPB) is applied, and the Smart key is removed from the vehicle.**



Never select **P** while the vehicle is in motion. Doing so can result in serious transmission damage.




Never select **R** while the vehicle is in forward motion. Doing so can result in serious transmission damage.



Never select a forward gear while the vehicle is moving backwards. Doing so can result in serious transmission damage.



Do not rev the engine or allow it to run above normal idle speed, while selecting **D** or **R** or while the vehicle is stationary, with any gear selected. Doing so can result in serious transmission damage.

 Do not allow the vehicle to remain stationary with a drive gear selected and the engine running. Always select **N** and apply the Electric Parking Brake (EPB) if the engine is to idle for a prolonged period. The vehicle may move unexpectedly with any other gear position selected.

 Do not use **N** for vehicle recovery.

If the rotary gear selector is obstructed, remove the obstruction and then start the engine. The gear selector should elevate.

If the rotary gear selector fails to elevate and there is no obstruction, a fault in the system is indicated. The gear selector can still be used in the lowered position but be aware, that it will not automatically select **P** when the engine is switched off. Therefore, **P** should be selected manually. The fault should be rectified by a Retailer/Authorised Repairer at the earliest opportunity.

## MANUAL GEAR SELECTION

The gear shift paddles can be configured to be active in both Drive (**D**) and Sport (**S**) or active in **S** only, via the vehicle settings/set-up. See **56, INSTRUMENT PANEL MENU**.

When the gear selector is in the **D** position (unless set to be active in **S** only mode), manual gear selection mode may be directly accessed by the single action of operating the steering wheel gear shift paddles (Commandshift).

If continued use of the manual gear selection mode (Commandshift) is required, the gear selector should be moved to the **S** position.

If the gear selector remains in the **D** position, temporary use of the manual gear selection mode will be held while the driver is accelerating, decelerating, cornering or continuing to request gear shift changes, via the steering wheel paddles.

## ROTARY GEAR SELECTOR

When the engine is started, the rotary gear selector elevates from its lowered, stowed position. If an obstruction occurs, switch the engine off, remove the obstruction and start the engine again.

If the rotary gear selector fails to elevate and there is no obstruction, a fault in the system is indicated. The gear selector can still be used in the lowered position. Make sure that Park (**P**) is selected before the engine is switched off. The fault should be rectified by a Retailer/Authorised Repairer at the earliest opportunity.

**P** should be selected before switching the engine off. However, it is possible to switch the engine off with Reverse (**R**), Drive (**D**) or Sport (**S**) selected. The rotary gear selector will automatically select **P**, while retracting into the centre console.

**Note:** *If the engine is switched off with Neutral (**N**) selected, the system will wait for 10 minutes before selecting **P**. This procedure only allows the vehicle to be conveyed through a car wash and should not be used for vehicle recovery purposes.*

## LIMP-HOME MODE

If the vehicle detects a transmission system fault, a warning message will be displayed in the Message centre and only limited gears may become available. If possible, the vehicle should be carefully driven to the nearest place of safety. In this event, seek qualified assistance.

**Note:** *The driver should be aware that the vehicle's performance will also be reduced and must take this into account when driving. The use of the steering wheel gear shift paddles will also be disabled.*

Some transmission faults may cause the gear selector to be locked in position, until the ignition is switched off. A flashing gear status in the Message centre, indicates that the driver's gear request cannot be engaged. In this event, select Neutral (N) and then select the required gear change again.

If the gearbox is still unable to engage the requested gear, contact a Retailer/ Authorised Repairer.



Selection of reverse gear is prevented, when the vehicle is travelling in excess of 24 km/h (15 mph). Never attempt to engage Reverse (R) gear while the vehicle is in forward motion. This may result in serious transmission damage and costly repairs.

A gear shift indicator warning lamp will illuminate briefly at the recommended (upshift) gear change point. See **63, GEAR SHIFT (GREEN)**.

## MANUAL TRANSMISSION



E160853

Lift the collar (1) when selecting Reverse (R) gear.