



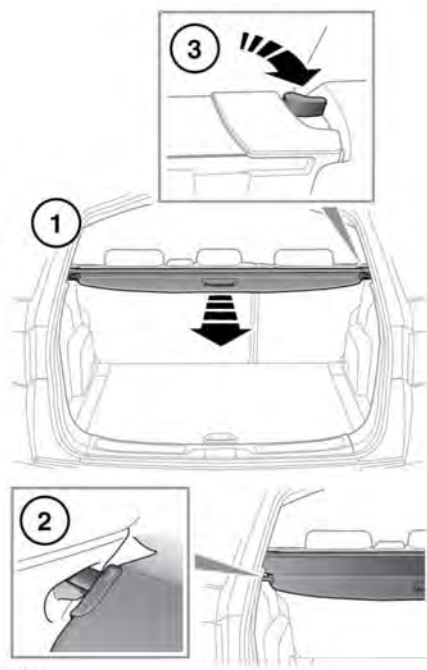


## LOAD CARRYING

-  Never allow passengers to travel in the loadspace under any circumstances. All vehicle occupants should be seated correctly and wear a seat belt at all times when the vehicle is in motion.
-  Always make sure objects carried within the vehicle are secured properly.

## LOADSPACE COVER


-  Do not store the loadspace cover loose in the vehicle. During an accident or sudden manoeuvre, the loadspace cover could cause serious injury or death.
-  Never place objects on top of the loadspace cover. During an accident or sudden manoeuvre, loose objects can cause serious injury or death.



E163428

1. Using the handle, pull the cover to unroll.
2. Engage the end pieces into the recessed areas, moulded into the loadspace sides. To retract the loadspace cover, disengage the ends from the recessed areas and allow the cover to retract into its housing.
3. To remove the cover, turn the release lever to unlock the assembly and disengage the pins from the sockets.

**Note:** Turn the release lever until resistance is felt and then pull further to release.

-  To avoid injury, the loadspace cover must NOT be left in the installed position when the third row seats are occupied.

- !** Do not attempt to raise the second row seats into the upright position, or tip them forward for third row access, while the loadspace cover is stowed behind the second row seats, as damage will result.

4. To refit the cover assembly, engage the left side into the recessed area, then engage the right side, push down into place until a audible click is heard.

## ROOF RACKS AND LOAD CARRIERS

- !** A loaded roof rack can reduce the stability of the vehicle, particularly when cornering and during crosswinds.

- !** Driving off-road with a loaded roof rack is not recommended.

Fit only a roof rack system that is designed for use with your vehicle. For further information, consult your Retailer/ Authorised Repairer.

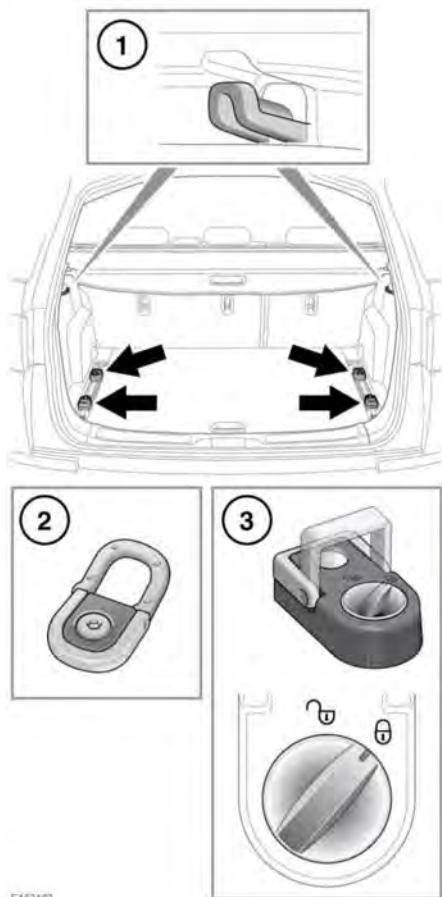
The maximum load for a Land Rover approved roof rack system is 75 kg while driving on-road. Off-road driving reduces the limit to 50 kg. The weight of the approved roof rack system is not calculated as part of the load.

If an alternative roof rack system is used, the weight of that system must be included as part of the load weight.

Loads must be evenly distributed without overhanging the rack. After travelling 50 km (30 miles), check the security of the roof rack and any load.

## LUGGAGE ANCHOR POINTS

- !** All items carried in the luggage area should be properly secured.



1. Bag hooks: The bag hooks should only be used for light weight items.
2. Fixed lashing eyes: Use to assist in safely securing large items.

3. Adjustable lashing eyes: First turn the locking button counter-clockwise to unlock. Press the button and slide to the required position in the adjusting rail. Release the button to latch into position. Move the lashing eye slightly until you hear a click. The lashing eye is now secured. Turn the button clockwise to lock.

**Note:** *A range of approved luggage retention accessories is available from your Retailer/Authorised Repairer.*