

## PASSIVE DIESEL MISFUELLING PROTECTION DEVICE

Some vehicles with a diesel engine are equipped with a passive misfuelling protection device, incorporated into the fuel filler neck.

If the narrow filler nozzle (fitted to pumps delivering unleaded petrol) is fully inserted into the vehicle's fuel filler neck, then the passive misfuelling protection device will activate to close the fuel filler neck. In this event the use of the reset tool, supplied with the vehicle, will be required to deactivate the misfuelling device.

**Note:** The passive misfuelling protection device may not activate if the petrol nozzle is only partially inserted.

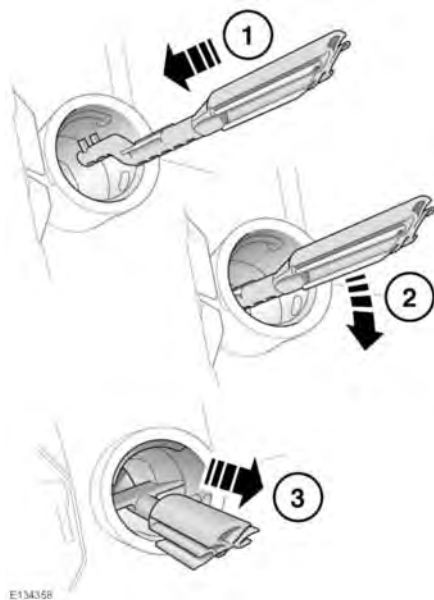


**When the passive misfuelling protection device is activated, it may cause fuel to be discharged from the filler neck.**

**Note:** It is the driver's responsibility to fill the vehicle with the correct fuel. The passive misfuelling protection device only reduces the risk of filling the vehicle with an incorrect fuel.

**Note:** The filler spout on some fuel cans and older fuel pumps may trigger the passive misfuelling protection device.

When the passive misfuelling device is activated, a yellow flap will be visible inside the filler neck. It will prevent fuel flow into the fuel tank. Before refuelling can continue, with the correct fuel, the misfuelling protection device must be reset.



E134358

The reset tool is stored in the vehicle's tool kit.

Use the following reset tool instructions:

1. Insert the reset tool with the teeth uppermost, as far as it will go into the fuel filler neck.
2. Locate the teeth by pushing down the top of the reset tool.
3. With the top of the tool pressed down and the teeth engaged, slowly pull the tool out of the filler neck to reset the device.



Do not twist the device, once the teeth have engaged.

**Note:** When reset, the yellow part of the passive misfuelling protection device should no longer be visible in the fuel filler neck.

Replace the reset tool back into the vehicle's tool kit.