

SINGLE LOCKING



Before exiting the vehicle, always make sure that the correct gear for parking is selected, the engine is switched off, the Electric Parking Brake (EPB) is applied, and the Smart key is removed from the vehicle.

Press the lock button on the Smart key briefly to lock the vehicle and activate the Perimeter alarm. The hazard warning lamps flash to confirm.

Single locking secures the vehicle and prevents the doors from being opened from the outside. The doors may still be unlocked and opened from inside the vehicle. In this state, only the Perimeter alarm is activated. See **18, PERIMETER ALARM**.

Note: This setting should be used in circumstances, such as a ferry crossing, when pets are to be left in the vehicle, or if a window must be left open, etc.

Note: Always secure your vehicle when left unattended. Where possible, always secure your vehicle to the maximum available level of security.

DOUBLE LOCKING



Never Double lock the vehicle with people, children or pets inside. In the event of an emergency, they would be unable to escape and the emergency services would be unable to release them quickly.

Press the lock button on the Smart key twice within three seconds to Double lock the vehicle and activate the Full alarm system. The hazard warning lamps flash twice to confirm and a Double lock tone sounds.

Double locking secures the vehicle and prevents the doors being opened from inside or outside of the vehicle. The doors cannot be unlocked or opened from inside the vehicle when Double locked.

This provides extra security if the vehicle is left unattended. The vehicle cannot be opened by breaking a window and operating the door locks from inside. Additionally, Double locking also activates the Full alarm system. See **18, FULL ALARM**.

Note: In this state, an open glass area may cause the alarm to sound, due to the movement of air currents. Make sure that they are fully closed before Double locking the vehicle.

LOCK CONFIRMATION

If you are uncertain whether the vehicle is locked and armed (either by Single or Double locking), press either the Smart key lock button or, if Keyless entry is fitted, touch an exterior door handle lock sensor. The hazard warning lamps flash once to indicate and confirm the current lock status.

Note: If the vehicle is **not** already locked and armed, press the lock button once to Single lock the vehicle.

AUTOMATIC RE-LOCKING AND RE-ARMING OF THE ALARM

If the vehicle is unlocked with the Smart key, and a door or the luggage area are not opened within 40 seconds, all of the doors will re-lock automatically to the previous locked state and the alarm will re-arm. This is a precautionary action to protect the vehicle when it is unintentionally unlocked.

PERIMETER ALARM



No modifications or additions should be made to the anti-theft system. Such changes could cause the system to malfunction.

The Perimeter (exterior) alarm system is activated when the vehicle is Single locked. See **17, SINGLE LOCKING**.

Once activated, the alarm system will sound if:

- The bonnet, luggage area or a door is opened.
- The engine **START/STOP** button is pressed without a valid Smart key present.
- The vehicle's battery is disconnected.
- An attempt is made to disconnect the alarm siren.

If the vehicle is fitted with a battery back-up sounder, the sounder will sound if the battery is disconnected, or an attempt is made to disconnect the sounder.

FULL ALARM

The Full alarm system is activated when the vehicle is Double locked. See **17, DOUBLE LOCKING**. Once activated, the alarm system will sound if:

- The bonnet, luggage area or a door is opened.
- Movement is detected within the vehicle's interior, including air currents.
- The vehicle is raised or tilted.
- Any glazed area is broken.

If the vehicle is fitted with a battery back-up sounder, the alarm system will also sound if:

- The vehicle's battery is disconnected.
- An attempt is made to disconnect the alarm siren.
- An attempt is made to disconnect the battery back-up sounder.

Note: *An open glass area may cause the alarm to sound, due to the movement of air currents. Make sure that they are fully closed before Double locking the vehicle.*

INTERIOR PROTECTION

The Interior protection feature of the Full alarm system may be temporarily disabled via **Alarm sensors** in the **Vehicle set-up** menu. See **56, INSTRUMENT PANEL MENU**.

Note: *If the Interior protection feature is temporarily disabled, it will be automatically enabled the next time the vehicle is Double locked with the Smart key.*

KEYLESS LOCKING



Never double lock the vehicle with people, children or pets inside. In the event of an emergency, they would be unable to escape and the emergency services would be unable to release them quickly.

- !** The Smart key may not be detected if it is placed within a metal container, or if it is shielded by a device with a back-lit LCD screen, such as a smartphone, laptop (including when inside a laptop bag), games console, etc. Keep the Smart key clear of such devices when attempting Keyless entry, Keyless locking or Keyless starting.

Note: The vehicle will not lock automatically.

Note: Loose coins, in the same pocket as the Smart key, may also affect its detection.

Note: Keyless locking activates only if the Smart key is detected outside the vehicle. If no Smart key is present, no locking will occur.



1. Lock sensor area: To single lock the vehicle, touch only the lock sensor once, without grabbing the door handle. The hazard warning lamps flash once to confirm locking. To Double lock the vehicle, touch the lock sensor twice within three seconds, without grabbing the door handle. The hazard warning lamps flash twice to confirm (with a long second flash). An audible confirmation (if enabled) may also be given.

Note: Do not place your fingers around the back of the handle while touching the sensor; doing so prevents the vehicle from locking.

Note: When locking the vehicle via Keyless locking, if one or more of the doors, the bonnet or the luggage area is not fully closed, or the ignition is ON, the vehicle will NOT lock. There will be NO audible mislock error warning. The hazard warning lamps will NOT flash and the Power fold mirrors (if fitted and enabled) will NOT fold in. Check that all of the doors, the bonnet and the luggage area are closed properly. Make sure the ignition is switched OFF and lock the vehicle again. If the mislock persists, consult your Retailer/Authorised Repairer.

GLOBAL CLOSING

! Make sure no children, pets, or obstructions are in any open aperture before operating Global closing.

With all of the doors closed, press and hold the Smart key lock button for three seconds. The vehicle Single locks and the Perimeter alarm is armed immediately. After three seconds, any open windows close.

Keyless Global closing (if enabled) can be achieved if a valid Smart key is on the driver's person or in a non-metallic bag or briefcase. Operate by touching the door lock sensor for three seconds. The vehicle Single locks and the Perimeter alarm is armed immediately.

Note: The windows will close only while the door lock sensor is being touched. To fully secure the vehicle, continue to touch the door lock sensor until all of the windows are fully closed.

Exiting the vehicle

Note: Global closing can be enabled and disabled via the **Vehicle Set-up** Instrument panel menu. See **56, INSTRUMENT PANEL MENU**.

BATTERY BACK-UP SOUNDER

In some markets, a separate battery back-up sounder is fitted. This device will sound the alarm if the vehicle's battery or the alarm sounder, is disconnected when the security system is armed.

TILT SENSOR

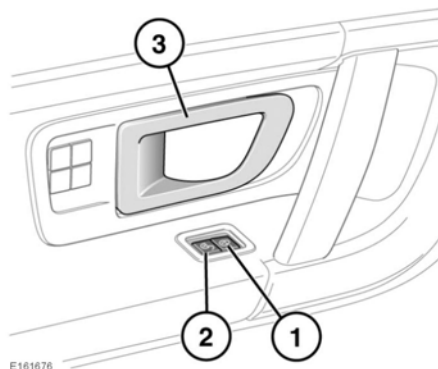
If fitted and armed, the Tilt sensor detects any change in the vehicle's angle to the ground. When the alarm is armed and the vehicle is Double locked, a significant change in the vehicle's angle activates the alarm.

Note: The Tilt sensor is an alarm sensor. The **Alarm Sensors** can be enabled/disabled (for one alarm cycle only) via the **Vehicle Set-up** menu. See **56, INSTRUMENT PANEL MENU**.

DOOR LOCKS AND RELEASE LEVERS



While a door is open, the locking latch is exposed. If your vehicle is fitted with the 'soft close' feature, do not attempt to manually close the latch, as it may also automatically 'soft close' and trap items or body parts.



1. Press to lock. With all of the doors closed, press a lock switch to lock all of the doors.
2. Press to unlock: Press an unlock switch to unlock all of the doors. Alternatively, pull either front door release lever (3) once to unlock all of the doors. Pull either rear door release lever once, to unlock the individual rear door.
3. Pull to unlock and open a door. If the door is locked, pull either front door release lever once to unlock all of the doors. Pull either rear door release levers once to unlock only the individual rear door.

Note: If the vehicle is locked with the Smart key, operating an interior door release lever unlocks only that door. If the door is opened, the alarm sounds.

Note: The rear door Child safety locks inhibit the rear door lock and unlock switches and the door release levers. See **41, CHILD SAFETY LOCKS**.

MISLOCK

When locking the vehicle with the Smart key, a mislock can occur if:

- One or more of the doors, the bonnet or the luggage area is not fully closed.
- The ignition is ON.
- A Smart key is left inside the vehicle.

If any of the above are present, the vehicle will NOT lock and there will be an audible mislock error warning. The hazard warning lamps will NOT flash and the door mirrors (if enabled) will NOT fold in. Check that all of the doors, the bonnet and the luggage area are closed properly. Make sure the ignition is switched OFF and lock the vehicle again. If the mislock persists, consult your Retailer/Authorised Repairer.

DEACTIVATING THE ALARM WHEN TRIGGERED

If the alarm has been triggered, it can be deactivated by any one of the following methods:

1. Pressing the unlock button on the Smart key.
2. Opening a door using Keyless entry.
3. Pressing the **START/STOP** button with a valid Smart key positioned correctly. See **118, KEYLESS START BACKUP**.

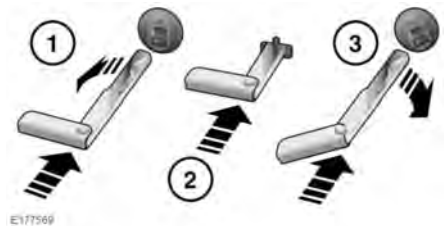
The cause of the last alarm activation can be displayed in the Message centre. See **56, INSTRUMENT PANEL MENU**.

EMERGENCY LOCKING

In the event of the battery discharging, or a fault with the locking system, each of the doors must be locked manually.

The emergency key blade is required for this procedure. See **6, UNLOCKING THE VEHICLE**.

Note: Do not leave the emergency key blade in the vehicle at any point during the emergency locking procedure.



1. Open a door and locate the emergency lock access cover on the edge of the door. The cover has an embossed lock icon. Insert the emergency key blade into the cover slot, rotate the cover counter-clockwise to first release it, then pull to remove it from the door. Keep the lock access cover safe.
2. Insert the emergency key blade firmly into the emergency lock. A firm push activates the door locking mechanism. Remove the emergency key blade.
3. Refit the emergency lock access cover and rotate it clockwise to secure it firmly.
4. Close the door and check that it is locked.

Exiting the vehicle

Repeat the procedure for all other unlocked doors.