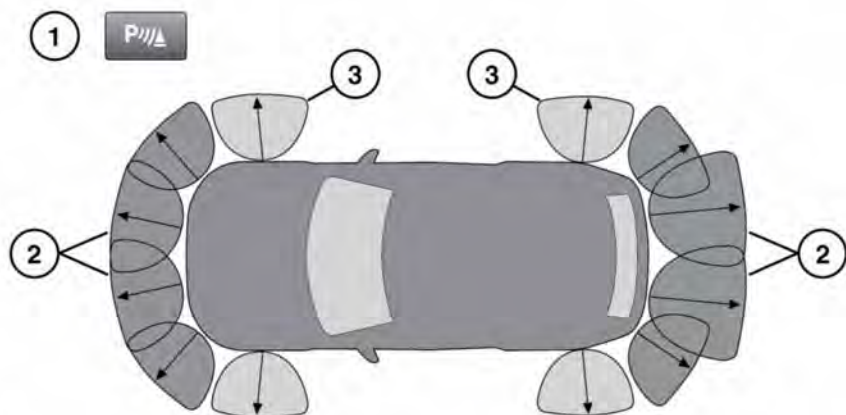


USING THE PARKING AID



E174981

1. Parking aid switch. Located next to the Touch screen.
2. Parking aid sensor detection zones.
3. 360° Park Distance Control sensor detection zones.

⚠ **Parking aid and 360° Park Distance Control sensors will not detect moving objects, such as children and animals, until they are dangerously close. Always use extreme caution when manoeuvring.**

⚠ The Parking aid and 360° Park Distance Control sensors may not detect some obstructions, for example, narrow posts or small objects close to the ground.



If accessories, for example, a tow bar, are fitted to the rear of the vehicle, particular care must be taken when reversing. The rear sensors will only indicate the distance from the bumper to the obstacle.

Note: If a trailer is connected to a Jaguar Land Rover approved trailer socket, the rear sensors will be disabled.

The Parking aid and 360° Park Distance Control systems assist the driver while manoeuvring the vehicle in confined spaces. When active, object tracking along the front, side, and rear of the vehicle are displayed on the Touch screen. The four corner sensors provide the 360° Park Distance Control monitoring along the vehicle sides. While the vehicle is passing an object that is within sensor range, the vehicle's integrated systems calculate its trajectory within the 360° Park Distance Control monitored area.

While the vehicle is stationary, the sensors will not detect an object/person approaching from the side. Also, at vehicle start-up, the vehicle has no sensor information about side objects/persons. In both of these situations, an X displays on the Touch screen in the vehicle's blind spots.

The front, side, and outer rear sensors monitor a 1.2 m area around the vehicle. The inner rear sensors monitor a 1.8 m area at the rear of the vehicle.

The Parking aid system automatically activates when Reverse (R) gear is selected, then the front, rear, and side sensors are activated. The sensors remain active until the vehicle's speed reaches 16 km/h (10 mph).

If a forward gear is subsequently selected, the front, rear, and side sensors remain active until the vehicle's speed reaches 16 km/h (10 mph).

By pressing and holding the Parking aid switch (1) for three seconds, the Parking aid system enters into an Auto-on mode, activating the front and side sensors when the vehicle's speed decreases to less than 10 km/h (6 mph), in a forward direction. The Parking aid switch LED lamp illuminates to confirm. Auto-on mode remains active after the ignition is switched off and on again. To disable the Auto-on mode, press and hold the Parking aid switch for three seconds. The Parking aid switch LED lamp extinguishes to confirm.

Note: To manually enable the front and side sensors in a forward direction, press the Parking aid switch for less than three seconds. The LED lamp illuminates to confirm. Press the switch again to disable the temporary use of this setting. The LED lamp extinguishes to confirm.

Note: The Parking aid system is always temporarily disabled if the vehicle's speed exceeds 16 km/h (10 mph).

When objects are detected, the system emits a warning tone, which increases in frequency as the vehicle gets closer to an object. The tone becomes constant when the object is within 300 mm of the vehicle.

Note: The warning tone stops when the distance between the vehicle and the object remains constant.

Note: If the Parking aid system does not detect an object likely to come into contact with the vehicle, it does not display any tracking information on the Touch screen.

Note: The sensors must be kept clean to maintain accuracy and performance. See **254, SENSORS AND CAMERAS**.

PARKING AID SYSTEM FAULT

If a system fault is detected, a long high-pitched tone is emitted and the switch indicator flashes. Also a graphic and the message **Parking Aid is not available**. **Please consult your dealer** is displayed on the Touch screen. Contact a Retailer/ Authorised Repairer as soon as possible.

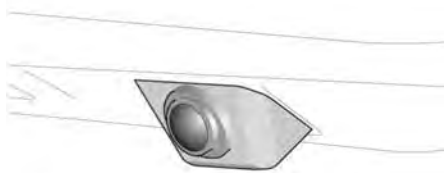
REAR CAMERA

⚠ It remains the driver's responsibility to detect obstacles and estimate the vehicle's distance from them when reversing.

ⓘ Some overhanging objects or barriers which could cause damage to the vehicle, may not be detected by the Rear camera.

ⓘ The Rear camera must be kept clean and free from debris or obstructions, for example, stickers, debris, leaves, mud, snow, ice, frost, or insects. Failure to keep the Rear camera clean may result in miscalculation or false indications.

The Rear camera is located above the rear number plate.



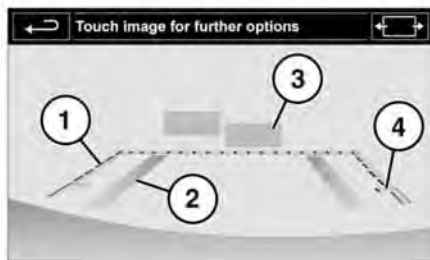
E174962

When Reverse (R) gear is selected, the Touch screen automatically displays a wide-angle, colour image from the rear of the vehicle.

Note: Vehicles with a Surround camera system can also split the screen's rear-view image, to also display a 360° view. See **86, TOUCH SCREEN HOME MENU**.

The Rear camera provides a rear-view image to assist in reversing the vehicle. Overlaid on the image are reversing guide lines and an indication of which sensors are active.

Note: The Rear camera display has priority over the Parking aids display. To cancel the Rear camera display at any time, press the **Home menu** button or touch the Back soft key.



E161393

1. Dotted line: The safe working width of the vehicle (including the exterior mirrors).
2. Solid line: The projected path, based on the current steering wheel position.
3. Parking sensor activation: A coloured area appears, to indicate which rear sensor(s) has been activated.
4. Loadspace access guide line: Do not reverse beyond this point if access is required for the Loadspace.



Touch this soft key to display a wider Rear camera view.

To cancel the Rear camera display at any time, press the **Home menu** button or touch the back soft key. See **86, TOUCH SCREEN HOME MENU**.

Note: A camera icon is displayed on the user options screen, when selected from **Extra features**. Touch the camera icon, to return to the Rear camera screen. The quality of the Rear camera views may vary in different lighting conditions.

To adjust the Rear camera settings while in Reverse (R) gear, touch anywhere on the Touch screen to display the user options.

Note: The user options menu/icon selection differs for vehicles with a Rear camera only system, or a Surround camera system.

Camera settings for vehicles fitted with a Rear camera (only) system:



Touch to enable or disable the Park assist guidance lines.

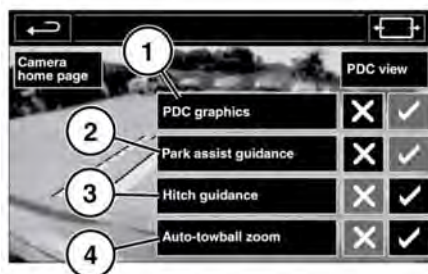


Touch to enable or disable the sensor/s active graphics view.



Touch to enable or disable the Hitch guidance lines. Use this feature to aid the process of guiding the vehicle to a towing hitch. A single line is displayed as the reversing guide line. See 106, HITCH GUIDANCE.

Camera settings for vehicles fitted with a Surround camera system:



1. Touch to enable or disable the **PDC graphics** view.
2. Touch to enable or disable the **Park assist guidance** view.

3. Touch to enable or disable the **Hitch guidance** lines. Use this feature to aid the process of guiding the vehicle to a towing hitch. A single line is displayed as the reversing guide line. See 106, HITCH GUIDANCE.

4. * Touch to enable or disable the **Auto-towball zoom**. As the vehicle closes to within 600 mm of a towing hitch, an automated zoom is operated.

* This feature may not be specified for your vehicle.

The Rear camera display on the Touch screen (for both camera systems) discontinues when either of the following apply:

- A forward gear is selected for longer than five seconds.
- A forward gear is selected and/or the vehicle's speed is greater than 18 km/h (11 mph).

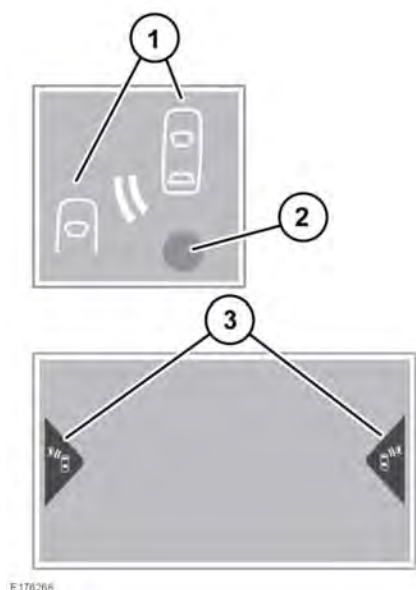
REVERSE TRAFFIC DETECTION



The Reverse Traffic Detection (RTD) system is a supplement to, not a replacement for, safe driving, good observation and use of the exterior and rear-view mirrors.

Note: RTD is automatically disabled when a trailer is connected and when Park assist is active.

In addition to the functionality provided by the Rear camera, the RTD system provides a warning to the driver of any moving vehicle, at either side, that may pose an accident risk during a reversing manoeuvre.



E 176266

1. The amber warning icon flashes in the relevant exterior mirror and an audible warning tone is emitted to indicate the presence of a moving vehicle.
2. When RTD is disabled, an amber dot displays in both exterior mirrors.
3. The Rear camera screen, or the Parking aid screen, displays a warning on the relevant side(s) of the screen.

To switch between the Rear camera and the Parking aid screen, touch the camera image or the **Cameras** icon, accordingly.

The system can be enabled or disabled via the Instrument panel menus. See **56, INSTRUMENT PANEL MENU**.

REVERSE TRAFFIC DETECTION SENSORS

The RTD system automatically disables if any of the sensors become partially or completely obscured. The amber warning indicator dot illuminates in the exterior mirrors and the message **Reverse Traffic Sensor Blocked** appears in the Message centre.

Check that there is nothing obscuring the rear bumper and that it is clear from ice, frost, snow, mud, and dirt.

If a fault with a radar sensor is detected, an amber warning indicator dot illuminates in the exterior mirrors and the message **Reverse Traffic Detection System Not Available** displays in the Message centre.

Note: Even if the detected fault affects the radar sensor on only one side of the vehicle, the whole system is disabled. If the fault is temporary, the system operates correctly once the engine is switched off and then on again.

If a fault occurs, consult a Retailer/ Authorised Repairer.