

WHEEL CHANGING SAFETY

Before raising the vehicle or changing a wheel, make sure that you read and comply with the following warnings:

WARNING

Always find a safe place to stop, off the highway and away from traffic.

Switch on the hazard warning lamps to alert all traffic of the obstruction.

Apply the Parking brake and engage transmission P on automatic vehicles, select first or reverse gear on manual vehicles. Turn the engine off and remove the Smart key from the vehicle. Failure to do so can result in unexpected movement of the vehicle, causing serious injury or death.

WARNING

Make sure that all passengers and animals are out of the vehicle and in a safe place, away from the highway.

WARNING

If available, place a warning triangle at a suitable distance behind the vehicle, facing towards oncoming traffic.

WARNING

Disconnect trailer from vehicle.

WARNING

Make sure that the vehicle and jack are both on firm level ground. Do not jack the vehicle if it is over a metal grating or manhole cover.

Make sure that the front wheels are in the straight ahead position.

WARNING

Always use the complete jacking lever assembly throughout the tire changing process, to minimize any chance of accidental injury.

Always position the jack from the side of the vehicle, in line with the appropriate jacking point.

Never place anything between the jack and the ground, or between the jack and the vehicle. Only jack the vehicle using the approved jacking points.

Do not attempt to raise the vehicle unless the jack head is fully engaged in the jacking point.

WARNING

The jack is designed for wheel changing only.

Never work beneath the vehicle with the jack as the only means of support. Always use correctly rated vehicle support stands, before putting any part of your body beneath the vehicle.

WARNING

When one rear wheel is lifted off the ground, transmission P position will not prevent the vehicle from moving and possibly slipping off the jack, as the Parking brake operates only on the rear wheels. Use a wheel chock when jacking the vehicle.

WARNING

Always chock the wheel diagonally opposite the wheel to be changed. Chock the front of a front wheel, or the rear of a rear wheel.

Wheel changing

⚠️WARNING

If jacking the vehicle on a slight slope is unavoidable, place chocks on the downhill side of the two opposite wheels. An additional chock will be needed.

⚠️WARNING

Take care when loosening the wheel nuts. The wheel brace may slip off if not properly attached and the wheel nuts may give way suddenly. Either unexpected movement, may cause an injury.

⚠️WARNING

Do not start or run the engine while the vehicle is supported only by a jack.

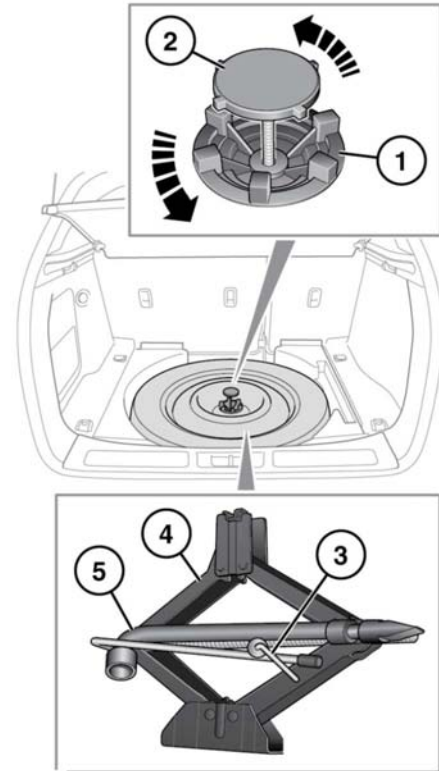
⚠️WARNING

Remove the spare wheel prior to jacking the vehicle, to avoid destabilizing the vehicle when raised.

Take care when lifting the spare wheel, and removing the punctured wheel. The wheels are heavy, and can cause injuries if not handled correctly.

After wheel changing, always secure tools, chocks, jack and replaced wheel in their correct stowage positions. Such objects, if not properly stowed, can become propelled objects in a crash or rollover, potentially causing injury or death.

TOOL KIT



E156391

1. Temporary spare wheel locking ring.
2. Temporary spare wheel retaining bolt.
3. Tool kit retaining bolt.
4. Jack.
5. Wheel brace.

⚠️WARNING

Secure the spare wheel, or the removed wheel, in the correct position using the retaining bolt.

Note: Examine the jack occasionally, clean and grease the moving parts, particularly the screw thread, to prevent corrosion.

REMOVING THE SPARE WHEEL

WARNING

Remove the spare wheel prior to jacking the vehicle, to avoid destabilizing the vehicle when raised.

WARNING

Wheels are heavy and if handled incorrectly may cause injury. Use extreme caution when lifting or maneuvering the wheels.

WARNING

After wheel changing, always secure the tools, chocks, jack and replaced wheel in their correct stowage positions. Such objects, if not properly stowed, can become flying missiles in a crash or rollover, potentially causing injury or death.

NOTICE

Do not use power tools to loosen the spare wheel. Doing so may damage the mechanism.

1. To access the temporary spare wheel, fold forward the rear edge of the load space cover then remove it.
2. Turn the temporary spare wheel locking ring counter-clockwise to gain access to the retaining bolt.
3. Turn the retaining bolt counter-clockwise until it comes free.
4. Remove the temporary spare wheel.

IMPORTANT – USE OF SPARE TIRE

WARNING

Adhere to the instructions on the temporary spare warning label, affixed to the wheel.

WARNING

Where fitted the temporary use spare wheel is **FOR TEMPORARY USE ONLY**. Drive with caution while the temporary spare wheel is fitted. Make sure that an original size wheel and tire are fitted as soon as possible.

WARNING

Do not fit more than one temporary spare wheel on the vehicle at any one time.

WARNING

Do not exceed 50 mph (80 km/h) while the temporary spare wheel is fitted.

WARNING

The temporary spare wheel must be inflated to 60 psi (4.2 Bar/420 kPa) and cannot be repaired.

WARNING

DSC must be switched on while the temporary spare wheel is in use.

WARNING

Traction devices, such as snow chains, cannot be used with a temporary spare wheel.

USING WHEEL CHOCKS

Note: Wheel chocks are not supplied as part of the tool kit.

Wheel changing

Wheel chocks are a useful addition to a vehicle's tool kit. Note the following advice when using wheel chocks:

⚠ WARNING

Always chock the wheels using suitable wheel chocks. Place the chocks on both sides of the wheel diagonally opposite the wheel to be changed.

⚠ WARNING

If jacking the vehicle on a slight slope is unavoidable, place the chocks on the downhill side of both wheels on the axle not being raised.

WHEEL CHANGING

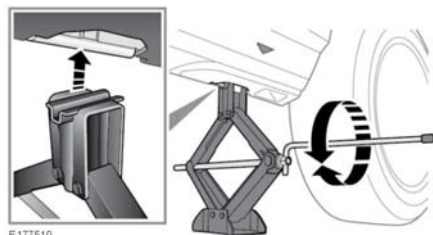
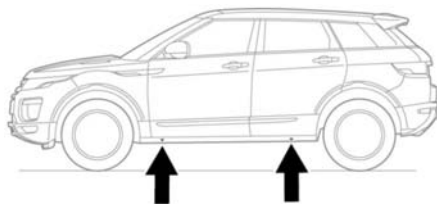
⚠ WARNING

Before raising the vehicle, refer to all warnings at the beginning of this section of the Owner's Handbook.

NOTICE

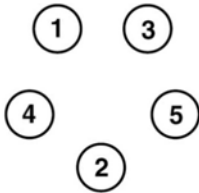
Jack up the vehicle using only the jacking points described, or damage to the vehicle could occur.

Before changing a wheel, read and observe the warnings, see **241, WHEEL CHANGING SAFETY**.



1. Before raising the vehicle, use the wheel nut brace to slacken the wheel nuts of the wheel to be replaced, by half a turn counter-clockwise.
2. Locate the jack under the relevant jacking point.
Note: Do not allow the jack to contact the sill at any other point as damage may result.
Note: The Sports pack sills include arrows to identify jacking points.
3. Unfold the cranking handle from its stowed position on the jack. Fit the wheel nut brace to the end of the cranking lever.
4. Rotate the handle clockwise to raise, until the jack pin locates into the jacking point.
5. Continue raising the vehicle until the wheel is clear of the ground.
6. Remove the wheel nuts and place them together where they cannot roll away.

7. Remove the wheel and place to one side. Do not lay the wheel on its face, as this may damage the finish.
8. Fit the temporary spare wheel to the hub.
9. Re-fit the wheel nuts and lightly tighten them. Make sure the wheel is making contact with the hub evenly.
10. Make sure the space under the vehicle is clear of obstructions before lowering the vehicle slowly and smoothly.
11. With all of the wheels on the ground and the jack removed, fully tighten the wheel nuts. The wheel nuts must be tightened in sequence (see the illustration below) to the correct torque of 98 lb.ft (133 Nm).



E153421

Note: *If it is not possible to torque the wheel nuts when a wheel is replaced, they should be set to the correct torque as soon as possible.*

Check and adjust the tire pressure as soon as possible.