

RECOVERY METHOD

The method for recovery/transportation of the vehicle is on a transporter or trailer designed for that purpose.

NOTICE

Make sure that vehicle recovery/transportation is carried out by suitably qualified personnel and the vehicle is secured correctly.

NOTICE

The recovery agent must activate the Service park release before recovery commences. This procedure is covered in a separate publication for service personnel. Failure to activate the Service park release can result in serious transmission damage.

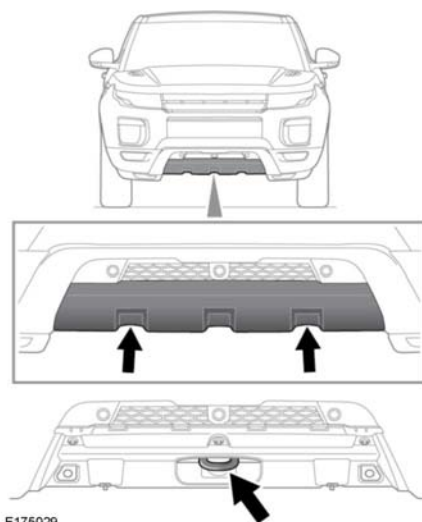
NOTICE

This vehicle should not be towed on all 4 wheels and should not be recovered with the front or rear wheels suspended. Doing so can result in serious transmission damage.

FRONT TOWING EYE

⚠ WARNING

The towing eye at the front of the vehicle is designed for on-road recovery only. If it is used for any other purpose, it may result in vehicle damage and serious injury.



The towing eye is located behind a panel in the bumper.

To access the towing eye: Rotate the two fasteners 90 degrees counter-clockwise. Pull the panel away from the bumper.

Fitment of the panel is a reverse of removal.

NOTICE

Remove the towing eye cover before driving off-road, to prevent damage or loss.

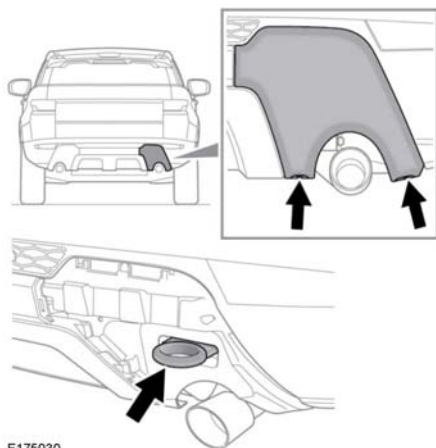
⚠ WARNING

Use extreme caution when detaching towing equipment. Vehicle movement is possible which can result in serious injury.

REAR TOWING EYE

⚠ WARNING

The towing eye at the rear of the vehicle is designed for on-road recovery only. If it is used for any other purpose, it may result in vehicle damage and serious injury.



The towing eye is located behind a panel in the bumper.

To access the towing eye: Rotate the two fasteners 90 degrees counter-clockwise. Pull the panel away from the bumper.

Fitment of the panel is a reverse of removal.

Note: The panel design may vary depending on the vehicle's specification.

NOTICE

Remove the towing eye cover before driving off-road, to prevent damage or loss.

⚠ WARNING

Use extreme caution when detaching towing equipment. Vehicle movement is possible which can result in serious injury.

OFF-ROAD RECOVERY

⚠ WARNING

If the towing points are to be used for off-road recovery, it is essential that off-road driver training, covering recovery techniques is undertaken.

Further information on off-road driver training can be found at: www.landroverexperience.com.