

3. Press and hold the tailgate close switch for 10 seconds to set the required opening height.
4. Press a close switch to close the tailgate, then open again to check that it opens to the required height.

Note: If, after performing part 3 of the process, the tailgate closes automatically, the required height has not been set. Repeat the process, making sure that all steps are adhered to.

To reset the maximum opening height, repeat the process, but when the tailgate reaches its current programmed height, manually move it to the fully open position, before pressing and holding the button.

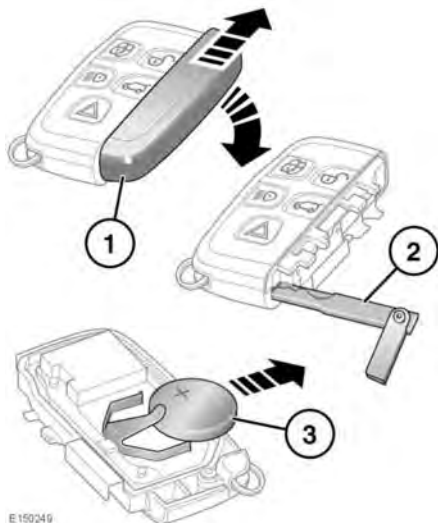
The tailgate may lose its position memory if there are multiple object detections, or if the battery voltage is low. Powered operation may be inhibited.

To reset the tailgate:

1. Manually close the tailgate.
2. Press a release switch.
3. Allow the tailgate to power fully open, or to the previously set position.
4. Press and release the close switch.
5. Allow the tailgate to power close fully. The tailgate's programmed memory is now be restored.

SMART KEY BATTERY REPLACEMENT

When the battery needs replacing, there is a significant decrease in the effective range and **SMART KEY BATTERY LOW** is displayed in the Message centre.



E 150249

To replace the battery:

1. Remove the cover by sliding in the directions of the arrows.
2. Use the emergency key blade to separate the Smart key body.
3. Fit a new and unused CR2032 type battery (available from a Retailer/ Authorised Repairer) with the positive (+) side upwards.

Note: Avoid touching the new battery. Moisture/oil from fingers can reduce battery life and corrode the contacts.