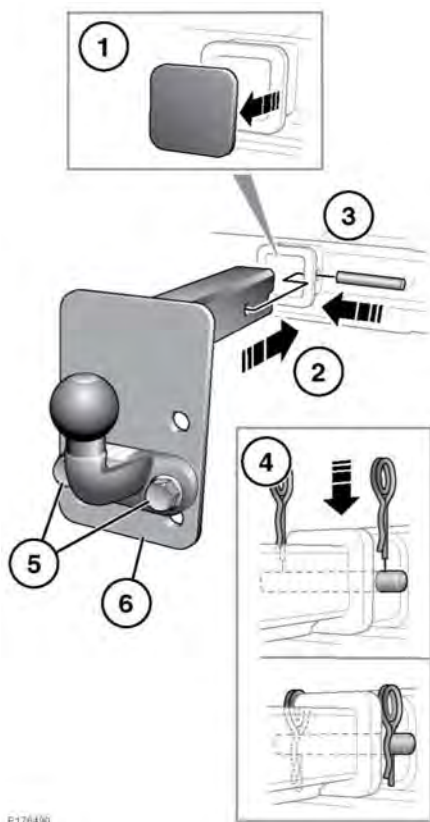


- To maintain vehicle stability, the trailer's nose load should be set at approximately 7% of the caravan/trailer's gross weight (and a minimum of 4%).
- When towing a trailer with more than one axle, the trailer should be loaded to achieve even weight distribution between axles.
- When calculating the laden weight of the trailer, remember to include the weight of the trailer, plus the weight of the load.
- If the load can be divided between the vehicle and trailer, loading more weight into the vehicle will generally improve stability. Do not exceed the vehicle's weight limits.
- Increase the rear tyre pressures on the towing vehicle to those for maximum vehicle loading conditions.
- Make sure that a suitable breakaway cable, safety chain, or secondary coupling is used. Refer to the trailer manufacturer's instructions for guidance.
- Always connect the breakaway cable or safety chain to the provided connection point. Do not loop it over the tow ball.
- Make sure that the tow ball is secure.
- Check the operation of all the lamps on the trailer.

## FITTING THE MULTI-HEIGHT DROP PLATE TOW BALL



E176490



The multi-height drop plate tow ball is very heavy, care must be taken when handling it.



Never leave the multi-height drop plate tow ball loose in the vehicle. It could become a projectile, in the event of heavy braking or an accident.

The multi-height drop plate tow ball is stored in a bag and should be strapped to an anchorage point in the rear stowage area.

1. Remove the plastic cover from the tow bar mounting and stow safely.
2. Insert the multi-height drop plate tow ball assembly into the tow bar.
3. Insert the retaining pin.
4. Insert the straight part of the locking clips into both ends of the retaining pin and push down firmly. Make sure that the clips are locked into position, as illustrated.
5. If the multi-height drop plate tow ball is to be adjusted, then remove the fixing bolts.
6. Move the multi-height drop plate tow ball to the required position on the drop plate. Refit the bolts and tighten to 170 Nm.