

## STORING A HYBRID VEHICLE

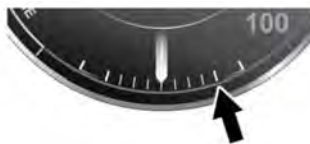
**⚠** Never start the engine or leave it running, when the vehicle is in an enclosed space. Exhaust gases are poisonous and can cause unconsciousness and death, if inhaled.

**!** Always keep the high voltage battery charged, failure to do so may cause damage to the battery.

If the vehicle is not used for 30 days or more, it is essential that the high voltage battery is charged. For longer storage periods, charge the high voltage battery every 30 days.

Charge the high voltage battery as follows:

1. Start the vehicle (using the engine START/STOP button and brake pedal sequence).
2. To view the tachometer, open the Instrument panel menu, then select **Instrument Display, Hybrid Content** and **Reduced Hybrid Display**.
3. With the vehicle in Park (P) and the Electric Parking Brake (EPB) applied, press the Intelligent stop/start button to run the engine constantly, and then lightly press and hold the accelerator to approximately 1 500 rpm.
4. To view the battery's state of charge gauge, open the Instrument panel menu, then select **Instrument Display, Hybrid Content** and **Full Hybrid Display**.
5. When the battery's charge level has reached the position indicated in the following graphic, the vehicle may be switched off.



E 175857

**Note:** In extreme cold climate conditions (circa -30°C), store the vehicle in a warmer area to protect it from the environment.

## ARDUOUS DRIVING CONDITIONS

When a vehicle is operated in extremely arduous conditions, more frequent attention must be paid to servicing requirements.