

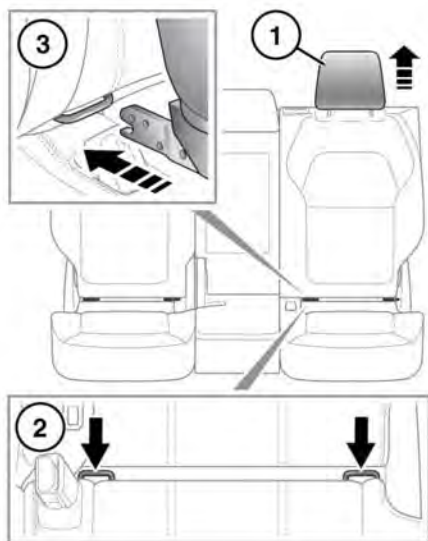


WARNING: Child restraint anchorages are designed to withstand only those loads imposed by correctly fitted child restraints. Under no circumstances are they to be used for adult seat belts, harnesses or for attaching other items or equipment to the vehicle.

ISOFIX anchorages are provided at the outer seat positions on the second row seats.



This symbol is shown on a label sewn into the seats, to indicate the position of the ISOFIX lower anchorages.



E175600

To install an ISOFIX child seat:

1. Raise or remove the head restraint.
2. The ISOFIX anchor points are located in the fold of the seats.

3. Slide the child seat locking mechanism into the anchor point.

If an upper tether is fitted to the child seat, see **43, INSTALLING TETHER ANCHORAGE CHILD RESTRAINTS**.

Test the security of the child restraint. To do this, attempt to pull the restraint away from the vehicle's seat and twist the restraint from side to side. Even if the restraint appears secure, you should still check the anchor points visually, to make sure they are correctly attached.

Note: Always make sure that if an upper tether is provided, it is fitted and tightened correctly.

INSTALLING TETHER ANCHORAGE CHILD RESTRAINTS



Always follow the child seat or restraint system manufacturer's instructions when fitting tether straps.



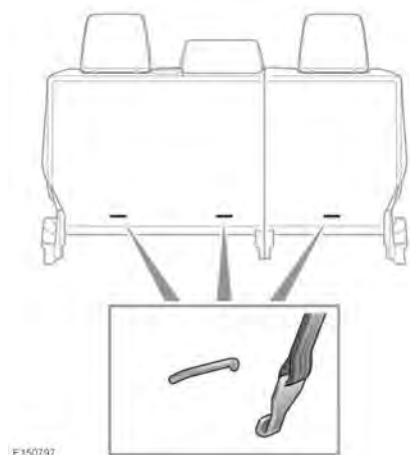
When fitting a child seat or restraint system, always pass the tether strap over the top of the seatback and beneath the head restraint.



If removing a head restraint in order to fit a child restraint, always secure the head restraint when storing it.



If a child seat or restraint system is to be fitted to the centre seating position, the centre armrest must be in the stowed position (folded into the seat).



E150797

Your vehicle is equipped with anchorage points on the back of the second row seat frames. These should be used to attach straps from child seats or restraint systems.

- Install the child restraint securely in one of the rear seating positions.
- Pass the tether strap over the seatback and beneath the head restraint for the outer seat positions.

Note: For the centre seat position, pass the tether strap over the fixed head restraint.

- Attach the tether strap hook to the tether anchor point on the back of the seat. Make sure that the tether strap hook is facing the correct way (see illustration).
- Tighten the tether strap, according to the child restraint manufacturer's instructions.