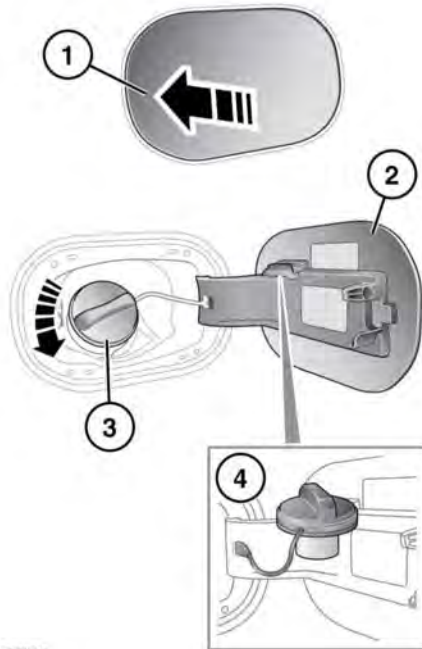


## FUEL FILLER FLAP

- ⚠** Take note of all warnings and instructions given on the label, affixed to the inside of the filler flap.



E177085

The fuel filler flap is located on the right side of the vehicle, at the rear.

1. Press and release the rear of the fuel filler flap to unlatch.
2. Pull the flap open. The label on the inside of the flap indicates the correct fuel for the vehicle.
3. Turn the filler cap counter-clockwise to undo.
4. Use the retaining clip to keep the filler cap out of the way while fuelling.

When replacing the filler cap, turn it clockwise until the ratchet clicks.

To close the filler flap, push the flap until it is securely latched.

## FUEL FILLER

- ⚠** When refuelling, make sure that all of the windows, doors and the sunroof are fully closed, particularly if young children or animals are in the vehicle.
- ⚠** Do not attempt to fill the fuel tank past its maximum capacity. If the vehicle is to be parked on a slope, in direct sunlight, or high ambient temperature, expansion of the fuel could cause spillage.
- ⚠** Do not operate the Auxiliary heater when refuelling the vehicle. Doing so may cause fuel vapours to combust causing a fire/explosion.
- !** Check the fuel pump information carefully, to make sure that you are putting the correct fuel into the vehicle.
- !** Make sure that the fuel filler nozzle is fully inserted into the filler neck.
- !** If the vehicle is filled with incorrect fuel, it is essential that you seek qualified assistance before you start the engine.

Filling station pumps are equipped with automatic cut-off sensing, to avoid fuel spillage. Fill the tank slowly until the filler nozzle automatically cuts off the supply. Do not attempt to fill the tank beyond this point.