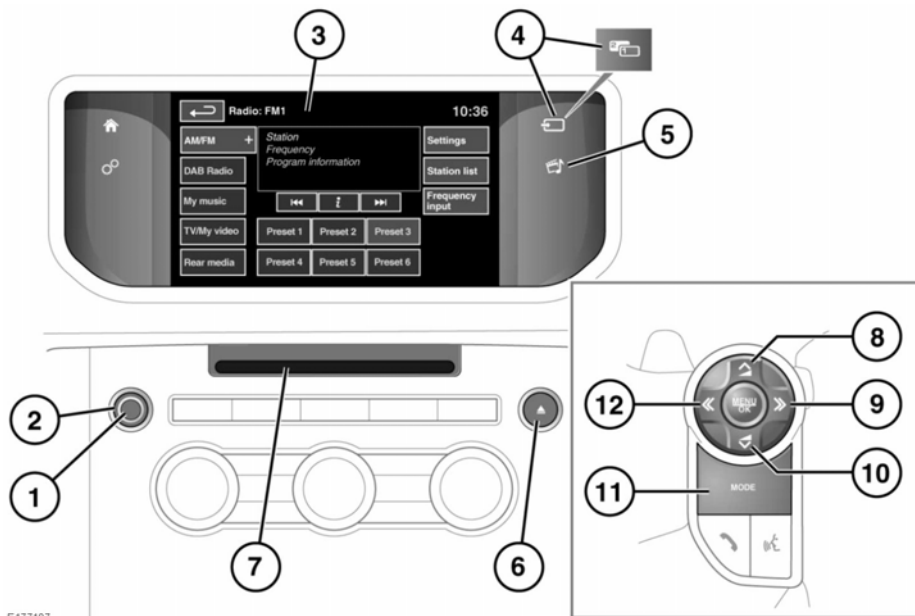


AUDIO/VIDEO CONTROLS



Sustained exposure to high sound levels (greater than 85 decibels) can damage your hearing.

1. Press to switch the Media system on/off.

Note: The Media system will operate with the ignition on or off but will always switch off, when the ignition is switched off. Switch the Media system on again, if required.

2. Rotate to adjust the volume level.

Note: If the volume is turned to zero while a Compact Disc (CD) is playing, the CD will pause play. Play will resume when a greater volume is selected.

3. Touch screen.

4. Media sources:

- Short press to scroll through all the Media sources.
- Long press to scroll through the Media source sub-selections, e.g. in **My music: iPod, Bluetooth, stored CD and CD**.

When Dual view is fitted, this icon is changed and the button should be pressed to switch Dual view on/off.

5. Press to display the Media menu.
6. CD/Digital Versatile Disc (DVD) eject button.
7. CD/DVD loading slot: