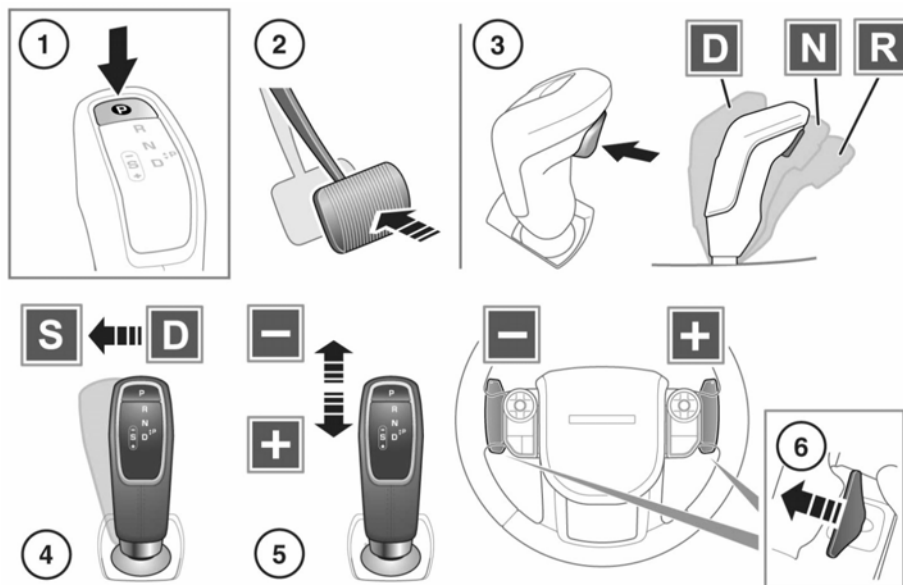


## AUTOMATIC TRANSMISSION



E151877

The gear selection status of the gear selector and the steering wheel's gear selector paddles (Commandshift), is displayed in the Message centre. The appropriate LED indicator lamp on top of the gear selector, illuminates to confirm selection.

**Note:** When the gear selector is released after normal operation, it will return to the central position, except for when in the Sport (S) position.



**Park (P) should only be engaged when the vehicle is stationary. If any other gear position is selected while the vehicle is stationary, the vehicle can move unexpectedly, which may result in death or serious injury. Always make sure the Electric Parking Brake (EPB) is applied after engaging P.**



Never select P while the vehicle is in motion. Doing so can result in serious transmission damage.

**Note:** P cannot be selected by manually moving the gear selector.

1. Press to select Park (P). The P LED indicator lamp will illuminate to confirm.  
Select P before switching the engine off.