

2. Press and hold the engine **START/STOP** button until the Instrument panel warning lamps illuminate.
3. Release the engine **START/STOP** button.

ROLLING RE-START

If the engine is switched off while the vehicle is moving, a rolling restart can be initiated by selecting Neutral (**N**) and pressing the engine **START/STOP** button.

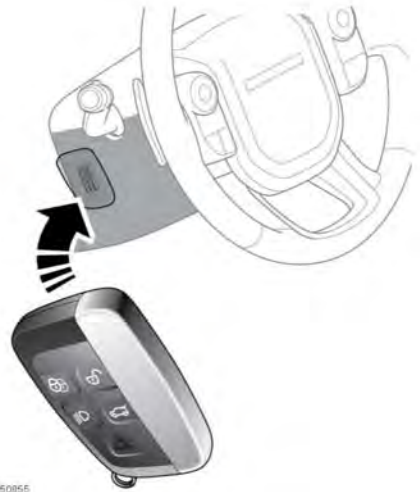
Note: The engine **START/STOP** button is inhibited for 2 seconds after the engine has been switched off.

KEYLESS START BACKUP

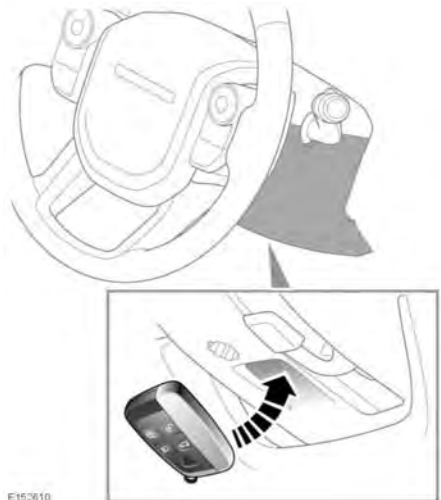
If the vehicle is unlocked using the emergency key blade, or the Smart key is not detected by the vehicle, it will be necessary to use the Keyless start backup feature to disarm the alarm and start the engine.

The Keyless start backup feature can only be used when the message **Smart Key Not Found - Position As Shown And Press Start Button** is displayed in the Message centre.

Electrically adjusted steering column



Manually adjusted steering column



1. Electrically adjusted steering column:
Position the Smart key flat against the side of the steering column.