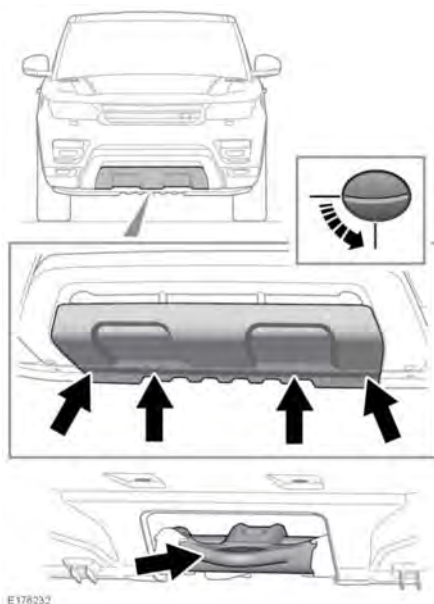


FRONT TOWING EYE

⚠ The towing eye at the front of the vehicle is designed for on-road recovery only. If it is used for any other purpose, it may result in vehicle damage and serious injury.

ⓘ Remove the front towing eye cover before driving off-road, to prevent damage or loss. The covers must be replaced before driving on the road.



E176232

The front towing point is located behind a removable cover in the lower front bumper.

1. Rotate each of the fasteners 90 degrees counter-clockwise with a coin (or similar).
2. To remove the cover, lower the top edge and then pull the cover forward.

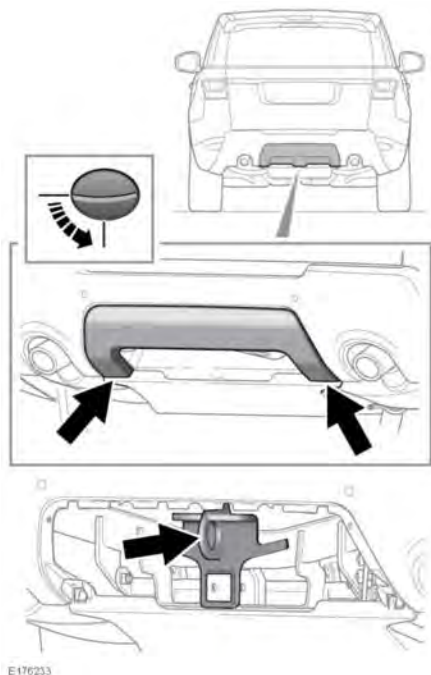
3. To refit, offer up the cover and make sure the two lugs at the bottom edge engage with the holes in the body panel.
4. Secure the cover in position by rotating each of the fasteners 90 degrees clockwise.

REAR TOWING EYE

⚠ The towing eye at the rear of the vehicle is designed for on-road recovery only. If it is used for any other purpose, it may result in vehicle damage and serious injury.

ⓘ Remove the rear towing eye cover before driving off-road, to prevent damage or loss. The covers must be replaced before driving on the road.

Note: The rear towing eye may be used to tow another vehicle, if required.

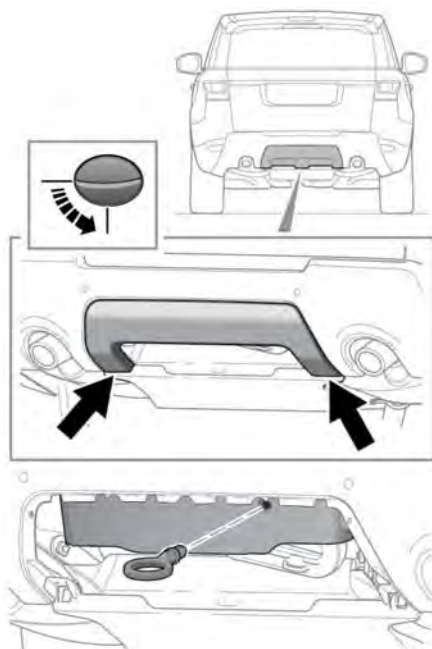


E176233

The rear towing point is located behind a removable panel in the lower rear bumper.

1. Rotate each of the fasteners 90 degrees counter-clockwise with a coin (or similar), to release the lower edge.
2. Rotate the cover to release the hooks at the top.
3. Remove the cover.
4. To refit the cover, position the cover in place and make sure that the four hooks on the top edge engage in the body panel.
5. Rotate the fasteners 90 degrees clockwise to secure the cover.

Vehicles fitted with a powered tow bar



E176234

The rear towing eye fixing point is located behind a removable panel in the lower rear bumper. The towing eye is stowed in the tool kit, located in the under floor area of the loadspace.

1. Rotate each of the fasteners 90 degrees counter-clockwise with a coin (or similar), to release the lower edge.
2. Rotate the cover to release the hooks at the top.
3. Remove the cover.
4. Screw the towing eye counter-clockwise into its fixing, until secure.