

## DYNAMIC STABILITY CONTROL (DSC)

**⚠** Dynamic Stability Control (DSC) is unable to compensate for driver misjudgement. It remains the driver's responsibility to drive with due care and attention, in a manner which is safe for the vehicle, its occupants and other road users.

**⚠** In extremely low temperatures below  $-20^{\circ}\text{C}$ , vehicles may initially have reduced stability and braking performance. In these conditions, drive with extra caution.

DSC is activated automatically when the ignition is switched on.

DSC maintains vehicle stability, even in critical driving situations. The system controls dynamic stability when accelerating and when starting from a standstill. Additionally, it identifies unstable driving behaviour, such as understeer and oversteer and helps to keep the vehicle under control by manipulating the engine output and applying the brakes at individual wheels. Some noise may be generated when the brakes are applied.

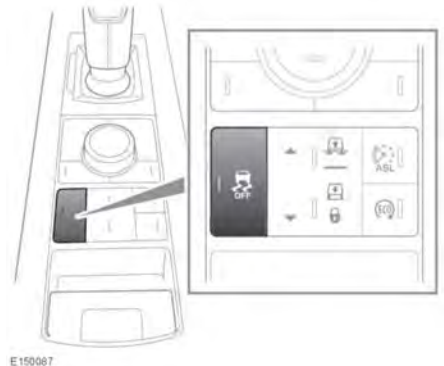
## SWITCHING DSC OFF

**⚠** Safety may be reduced by inappropriately disabling Dynamic Stability Control (DSC). In the majority of driving situations and particularly on-road, it is recommended that you do not disable DSC.

**ⓘ** DSC must be switched off when traction devices are fitted. See **302, USING SNOW CHAINS**.

In some driving conditions, it may be appropriate to disable DSC to improve traction. These conditions include:

- Rocking the vehicle out of a hollow or deep rut.
- Pulling away in deep snow or on a loose surface.
- Driving through deep sand or mud.



To disable DSC, press and briefly hold the DSC **OFF** button. A chime will sound and the Message centre will temporarily display **DSC OFF** to confirm. The DSC OFF warning lamp will illuminate (see **60, DYNAMIC STABILITY CONTROL (DSC) (AMBER)**). Deactivating DSC also reduces the level of Traction control intervention and may lead to an increase in wheel spin.

**Note:** DSC cannot be disabled in Automatic mode. See **168, TERRAIN RESPONSE OPERATION**.

## SWITCHING DSC ON

**Note:** DSC is enabled automatically when the ignition is switched on.