

The Passive unlocking sensor is located on the inner surface of the door handle. Grip and pull the door handle to open the door. The vehicle unlocks, the alarm system is disarmed and the hazard warning lamps flash twice as 'unlock' confirmation. If power-fold mirrors are fitted and enabled, they fold out.

**Note:** *If Single-point entry is the current security setting and a door other than the driver's door is opened first, all of the doors will unlock.*

When all the open doors have been closed, after entering the vehicle, the vehicle scans the interior for a valid Smart key. If a valid Smart key is not detected, **SMART KEY NOT FOUND** is displayed in the Message center. If this situation occurs, then use a valid Smart key to carry out the **Keyless start backup procedure**. See **102, KEYLESS START BACKUP**.

## CONVENIENCE MODE

When the driver's door is opened using either the Smart key or Passive entry, the vehicle's electrical system initiates the Convenience mode. The following systems become functional:

- Driver position memory.
- Seat and steering column adjustment.
- Interior and exterior lighting.
- Message center.
- Auxiliary power socket.

## SMART KEY SYSTEM TRANSMITTERS

### WARNING

Any person fitted with an implanted medical device should make sure the device is kept at a distance of at least 8.7 in (22 cm) away from any transmitter mounted in the vehicle. This is to avoid any possibility of interference between the system and device. Interference may cause the implanted medical device to malfunction, causing serious injury or death. For more information on the locations of the security system transmitters, see **273, SMART KEY TRANSMITTER LOCATIONS**.

## DRIVE-AWAY LOCKING

Drive-away locking automatically locks all of the doors when the vehicle reaches a set speed. This feature can be enabled/disabled via **Drive-away locking** in the **Vehicle Set-up** menu. See **53, INSTRUMENT PANEL MENU**.

## OPENING AND CLOSING THE TAILGATE

### WARNING

While the tailgate is open, the locking latch is exposed. Do not attempt to manually close the latch, as it may also automatically 'soft close' and trap items or body parts.

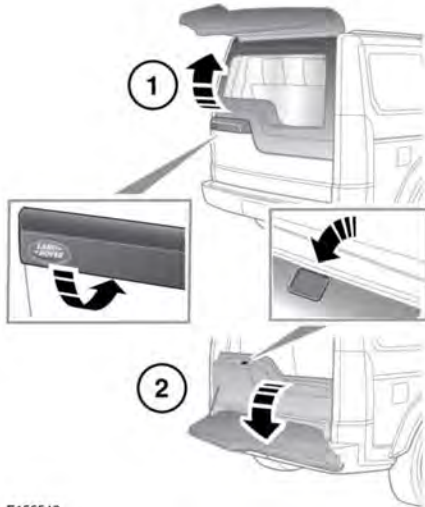
### **NOTICE**

Make sure there is sufficient space above and at the rear of the vehicle, before operating the tailgate. Insufficient opening space may result in damage to the vehicle.

# Entering the vehicle

## NOTICE

Do not operate the tailgate if a cycle rack is fitted to the tailgate. Remove any cycles and/or racks before operating the tailgate.



E155646

1. Upper tailgate release: Press to release and then lift the tailgate to open.

**Note:** The tailgate external release operates if all of the doors are unlocked and the gear selector is in the Park (P) position. If the gear selector is in the Neutral (N) position, the external release operates only if all of the doors are unlocked, and the ignition is in Convenience mode or switched off. It will not operate if the gear selector is in any other position.

2. Lower tailgate release. With the upper tailgate open, press to release. Lower the tailgate.

The tailgate can also be released using the following methods:

- The interior tailgate release switch. See **296, DRIVER CONTROLS**.
- The Smart key tailgate release button. See **8, UNLOCKING THE VEHICLE**.

**Note:** The tailgate will not open if the vehicle is traveling at, or above, approximately 3 mph (5 km/h).

Closing the tailgate: As the closing tailgate reaches its lowest position, it will automatically 'soft close' to the fully closed position. Do not slam the tailgate.

**Note:** If a valid Smart key cannot be detected within 39 in (1 m) of the rear of the vehicle, an audible warning sounds to indicate a mislock and the tailgate re-opens after approximately three seconds.

**Note:** If the Smart key is inadvertently left inside the loadspace and the vehicle is locked and the alarm set, an audible warning sounds to indicate a mislock and the tailgate re-opens after approximately three seconds. The Smart key may not be detected if it is placed within a metal container, or if it is shielded by a device with a back-lit LCD screen, such as a smart phone, laptop (including when inside a laptop bag), games console, etc.

**Note:** Make sure the tailgate is fully closed before leaving the vehicle unattended. Visible and audible warnings indicate if the vehicle is locked and the alarm armed. If there are no visible or audible warnings upon closing the tailgate, the vehicle may be unprotected.