

**Note:** If you are travelling in a different country, a call will still connect, however, the vehicle's location and details may not be automatically sent.

## INCONTROL SECURE

InControl Secure provides a stolen vehicle tracking service. In the event that the vehicle has been tampered with, or moved without your consent, you will be contacted by the InControl Secure Monitoring Centre. Alternatively, use the InControl Remote Smartphone App, or the phone number on the InControl website, to contact the InControl Secure Monitoring Centre.

When the vehicle is being serviced or repaired, InControl must be set to Service mode. This can be done by using the InControl Remote Smartphone App, or via the InControl website.

If the vehicle is being transported, InControl must be set to Transport mode. Again, this can be done by using the InControl Remote Smartphone App, or via the InControl website.

Failure to set Service mode or Transport mode could trigger a false theft alert.

**Note:** When set, Service or Transport mode should be updated every 10 hours, or more frequently, if required.

**Note:** For further information, visit the InControl section of [www.landrover.com](http://www.landrover.com).

## INCONTROL WI-FI

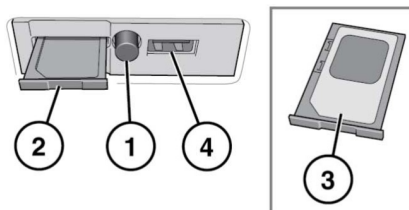
InControl Wi-Fi allows passengers to connect to the internet using a high speed 3G connection.

A SIM card must be inserted into the SIM card holder. The SIM card holder is located behind a cover on the left side of the loadspace.

The SIM card reader utilizes a 'Mini-SIM' interface. If your SIM card is a different size, for example, 'Micro-SIM', an adaptor or replacement SIM card will be required.

Your Wi-Fi Hotspot IMEI number can be accessed via the Wi-Fi hotspot router menu (see Wi-Fi settings below). Your mobile network provider may need this information in order to activate a SIM card.

**Note:** If your SIM card has previously been used in a mobile phone, or any other device, and a Personal Identification Number (PIN) has been set, remove the PIN before using the SIM card in the vehicle.



E160598

To install a SIM card, press the button (1) to release the SIM card holder (2). Insert the SIM card into the holder, as indicated (3).

Fully close the SIM card holder.

**Note:** The USB port (4) is for Service use only.



Make sure the SIM card is located correctly in the card holder. Failure to do so may damage the SIM card or SIM card reader.

## Wi-Fi settings

InControl Wi-Fi can be turned on and off using the Touch screen. On the **Extra features** screen, select **WiFi Hotspot**. For more information, see **80, EXTRA FEATURES**.