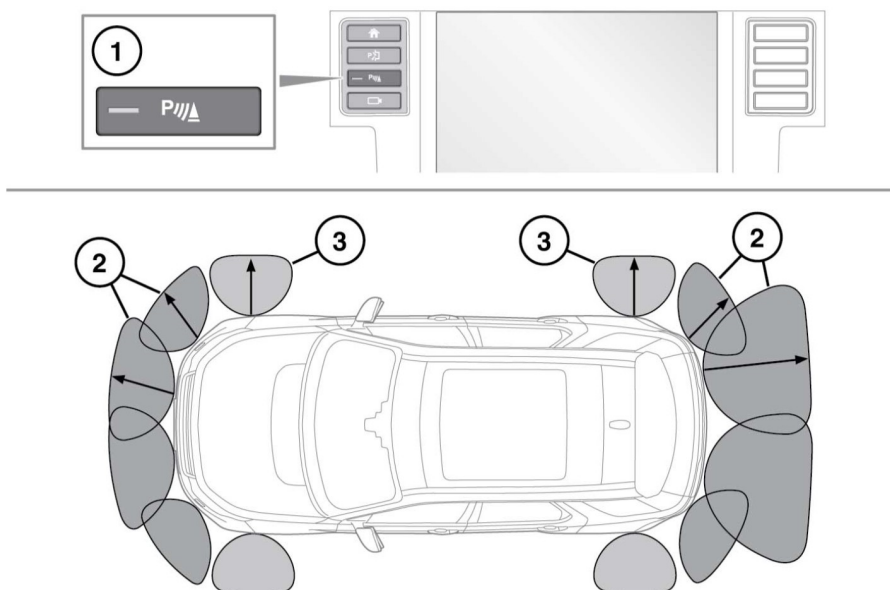


Parking aids

USING THE PARKING AID



E159918

1. Parking aid button.
2. Parking aid sensor detection zones.
3. 360° Park Distance Control sensor detection zones.

⚠ **Parking aids and 360° Park Distance Control sensors will not detect moving objects, such as children and animals, until they are dangerously close. Always use extreme caution when manoeuvring.**

⚠ The Parking aid and 360° Park Distance Control sensors may not detect some obstructions, for example narrow posts or small objects close to the ground.

⚠ If accessories, e.g., tow bar, are fitted to the rear of the vehicle, particular care must be taken when reversing. The rear sensors will only indicate the distance from the bumper to the obstacle.

Note: If a trailer is connected to a Land Rover approved trailer socket, the rear sensors will be disabled.

The Parking aid and 360° Park Distance Control systems assist the driver while manoeuvring the vehicle in confined spaces. When active, object tracking along the front, side, and rear of the vehicle will be displayed on the Touch screen.

The Parking aid system is automatically activated when reverse gear is selected.