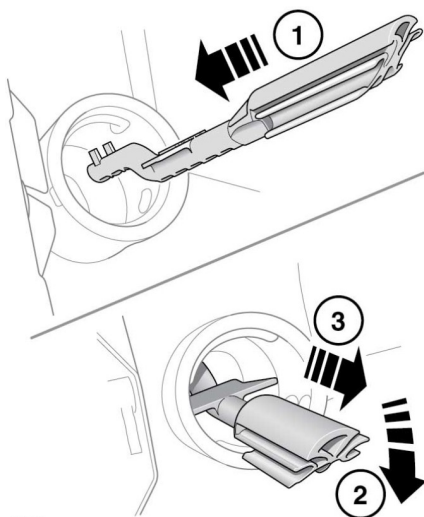


Fuel and refuelling


The reset tool is located under the loadspace floor.



E132653

Reset the misfuel protection device as follows:

1. Insert the reset tool with the teeth uppermost, as far as it will go into the filler neck.
2. Locate the teeth by pushing down on the top of the reset tool.
3. With the top of the tool pressed down and the teeth engaged, slowly pull the tool out of the filler neck to reset the device.

 Do not twist the device, once the teeth have engaged.

Note: The yellow part of the protection device should no longer be visible in the filler neck.

Return the reset tool to the loadspace.

FUEL TANK CAPACITY

Avoid the risk of running out of fuel and never intentionally drive the vehicle when the fuel gauge indicates that the tank is empty. When refuelling your vehicle after the fuel gauge reads empty, you may not be able to add the fuel quantity, as there will be a small reserve remaining in the tank. See **250, CAPACITIES**.