

E167658

1. Pop out the access cover.
2. Locate the towing eye through the bumper and fully screw the towing eye clockwise into the towing point, until secure.

Fitment of the panels is the reverse of removal.

### TRANSMISSION PARK RELEASE

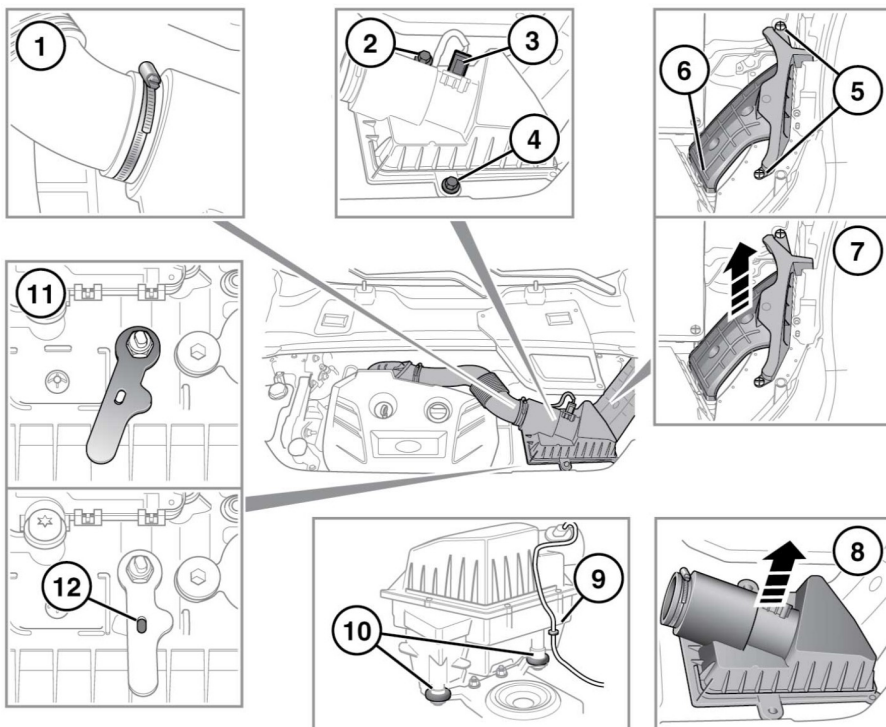
When recovering the vehicle, it is essential that the Transmission park release mechanism is activated. This will lock the transmission in Neutral (**N**) and prevent the transmission from automatically selecting Park (**P**). The Transmission park release mechanism is activated by a lever, beneath the air cleaner in the engine compartment.



**Make sure that the vehicle is secured with wheel chocks, apply the Electric Parking Brake (EPB), or firmly press the brake pedal (this will require 2 people). Failure to do so can result in unexpected movement of the vehicle, causing serious injury or death.**

**Note:** This procedure will require a tool with a 5 mm diameter, to lock the Transmission park release mechanism in the Neutral (**N**) position.

## Vehicle recovery



E165194

To activate the Transmission park release mechanism, carry out the following:

1. Release the clip on the air cleaner outlet pipe.
2. Release the wiring harness clip.
3. Disconnect the electrical connector.
4. Undo the bolt.
5. Rotate the 2 clips counter-clockwise and pull upwards to remove.
6. Release the clip.
7. Remove the air cleaner intake pipe.
8. Apply upwards pressure to the air cleaner assembly.
9. Release the wiring harness clip.
10. Release the air cleaner assembly from the 2 locating grommets, and remove the air cleaner assembly.  
**Note:** Stow the air cleaner in a suitable place.
11. Rotate the park release lever counter-clockwise, until it is in the forward position.
12. Insert a suitable tool with a 5 mm diameter (Allen key, drill bit, etc.), through the hole in the park release lever, and locate the tool in to the transmission casing.