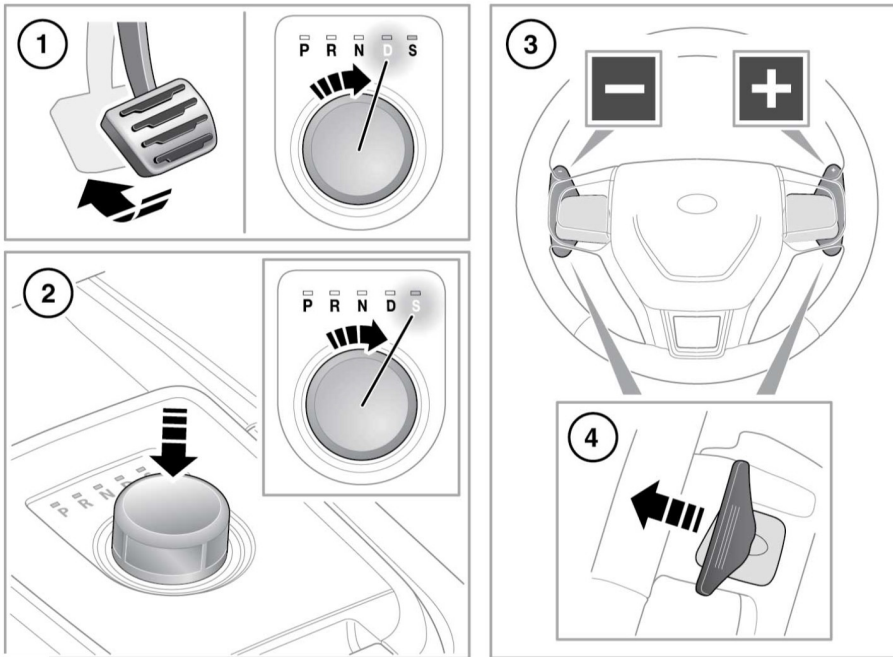


AUTOMATIC TRANSMISSION



E100190

The rotary gear selector rotates in either direction. At engine start-up, the gear selector elevates out of its parked position.

The CommandShift™ and gear selector status will be displayed in the Message centre.

1. To select Drive (**D**), Reverse (**R**), Neutral (**N**) or Park (**P**), apply the brake pedal, then rotate the gear selector to the required position. The related LED indicator by the gear selector will illuminate. While in **D**, the gear changing is fully automatic. The shift points are determined by the accelerator pedal position and the vehicle's current speed.

To achieve rapid acceleration (kick-down) while in **D**, quickly press the accelerator pedal to its full travel. When the accelerator pedal is relaxed, normal automatic gear changing will resume.

Note: Before selecting **D**, **R**, **N** or **P**, make sure the vehicle is stationary and the brakes are applied.

Note: If pressure is applied to the gear selector before the brake pedal is applied, the selected gear may not be available. In this situation, remove the pressure from the gear selector, make sure the brake pedal is applied and select the required gear, as described.