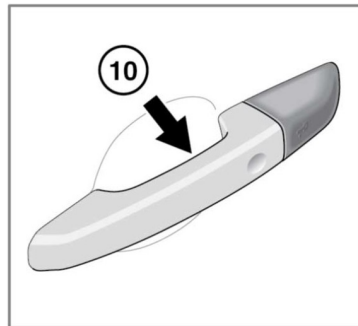
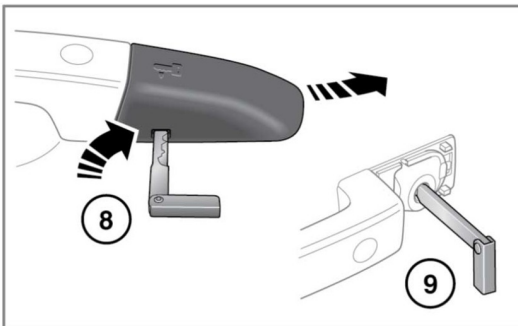
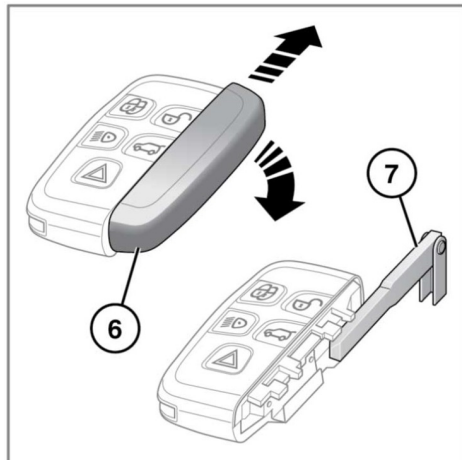
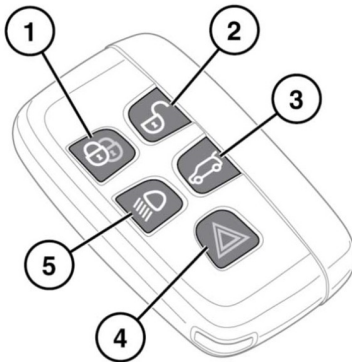


# Entering the vehicle

## UNLOCKING THE VEHICLE



E166656



Any person fitted with an implanted medical device should make sure that the device is kept at a distance of at least 22 cm (8.7 inches) away from any transmitter mounted in the vehicle. This is to avoid any possibility of interference between the system and the device.

Interference may cause the implanted medical device to malfunction, causing serious injury or death. For more information on the locations of the security system transmitters, see 255, **SMART KEY TRANSMITTER LOCATIONS**.



**The vehicle can be operated when the Smart key is inside the vehicle. So to prevent accidental or unauthorised operation, never leave the Smart key unattended in the vehicle. Also never leave children or animals unattended in the vehicle.**

**Note:** The operational range of the Smart key will vary considerably, depending on atmospheric conditions and interference from other transmitting devices.

**Note:** If any door, or the tailgate, is unlocked 10 times within a short period, the latch is disabled for approximately one minute.

The vehicle is supplied with 2 Smart keys. The Smart keys act as remote controls for the locking and alarm system, and allow the vehicle to be locked, unlocked and driven without the use of a conventional key. See **8, KEYLESS ENTRY, 15, KEYLESS LOCKING** and **108, STARTING THE ENGINE**. Each Smart key also has an emergency key housed behind a slide off cover.

1. Lock: Press to secure the vehicle. The vehicle can be Single or Double locked. See **14, SINGLE LOCKING, 14, DOUBLE LOCKING** and **16, GLOBAL CLOSING**.
2. Unlock: Press briefly to unlock the vehicle and deactivate the alarm. The hazard warning lamps will flash twice to indicate that the vehicle is unlocked and the alarm has been deactivated. The interior lamps will illuminate to assist entry to the vehicle. Power-fold mirrors will unfold (if enabled). See **8, GLOBAL OPENING**.
3. Tailgate operation: Press briefly to open/close the tailgate. If the vehicle is locked and armed, the Perimeter alarm will remain active while the tailgate is open, but intrusion and inclination sensing systems will be disabled for the duration that the tailgate is open.

When closing the tailgate again, if the vehicle is already locked and armed, the hazard warning lamps will flash after a few seconds to confirm that the full alarm system has been reactivated. There will also be an audible sound if the vehicle was double locked. See **10, OPENING AND CLOSING THE TAILGATE**. See also **11, OPENING AND CLOSING THE POWERED TAILGATE**.

**Note:** Make sure the Smart key does not remain in the vehicle prior to closure. If the vehicle is in an area of localised Radio Frequency (RF) interference or the Smart key is shielded by metal objects, the vehicle may close and lock with no means of opening again.

4. Panic alarm:
  - Press and hold for 3 seconds (or press 3 times within 3 seconds) to activate the horn and the hazard lamps.
  - Once active for more than 5 seconds, the alarm can be cancelled by pressing the button and holding for 3 seconds (or pressing 3 times within 3 seconds).
  - The emergency alarm will also be cancelled if a valid Smart key is present when the START/STOP button is pressed.
5. Approach illumination:
  - When approaching the vehicle during darkness, press to switch on the approach illumination. Press again to turn the approach lamps off.

**Note:** In some markets, a second press of the button will turn on the headlamps and reversing lamps. A third press will be required to turn the lamps off.