

1. To lock: With all of the doors closed, press any lock button to lock all of the doors.
2. To unlock: Press any unlock button to unlock all of the doors. Alternatively, pull either front door release handle (3) once to unlock all of the doors. Pull either rear door release handle once to unlock the individual rear door.

**Note:** All unlock buttons are inhibited when the vehicle is locked with the Smart key.

3. Door release handle: Pull to unlock and open the door(s). If the door is locked, pulling either front door handle once will unlock all of the doors. Pulling either rear door handle once will unlock the individual rear door.

**Note:** The rear child security feature will inhibit the rear door lock and unlock switches, and the door release handles. See 36, **CHILD SAFETY LOCKS**.

### MISLOCK

When locking the vehicle with the Smart key, a Mislock can occur if:

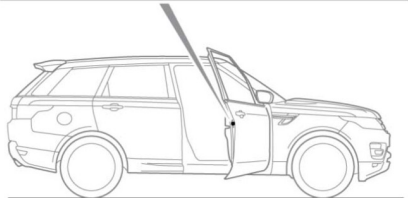
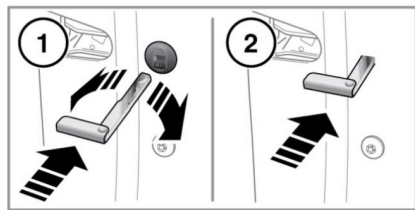
- One or more of the doors, the bonnet or the tailgate is not fully closed.
- The ignition is ON.
- A Smart key is left inside the vehicle.

If any of the above are present, the vehicle will NOT lock and there will be an audible mislock error warning. The hazard warning lamps will NOT flash and the door mirrors (if enabled) will NOT fold in. Check that all of the doors, the bonnet and the tailgate are closed properly. Make sure the ignition is turned OFF and lock the vehicle again. If the mislock persists, consult your Dealer/Authorised Repairer.

### DEACTIVATING THE ALARM WHEN TRIGGERED

If the alarm has been triggered, it can be deactivated by pressing the Smart key unlock button, or by positioning the Smart key against the steering column and pressing the engine START/STOP button. See 109, **KEYLESS START BACKUP**.

### EMERGENCY LOCKING



E 149765

In the event of the battery discharging or a fault with the keyless locking system, the doors must be locked manually.

**Note:** Do not leave the emergency key blade in the vehicle, at any point during the emergency locking procedure.

1. Open the door and locate the emergency lock access cover. Using the emergency key blade (see 6, **UNLOCKING THE VEHICLE**), rotate the cover to release it from the door. Remove the cover and store it safely.
2. Insert the emergency key blade firmly into the emergency lock.  
The emergency key blade can now be removed.

## Exiting the vehicle

3. Refit the emergency lock access cover and rotate it clockwise to secure it firmly.
4. Close the door and check to make sure the door is locked.  
Repeat the procedure for all other unlocked doors.