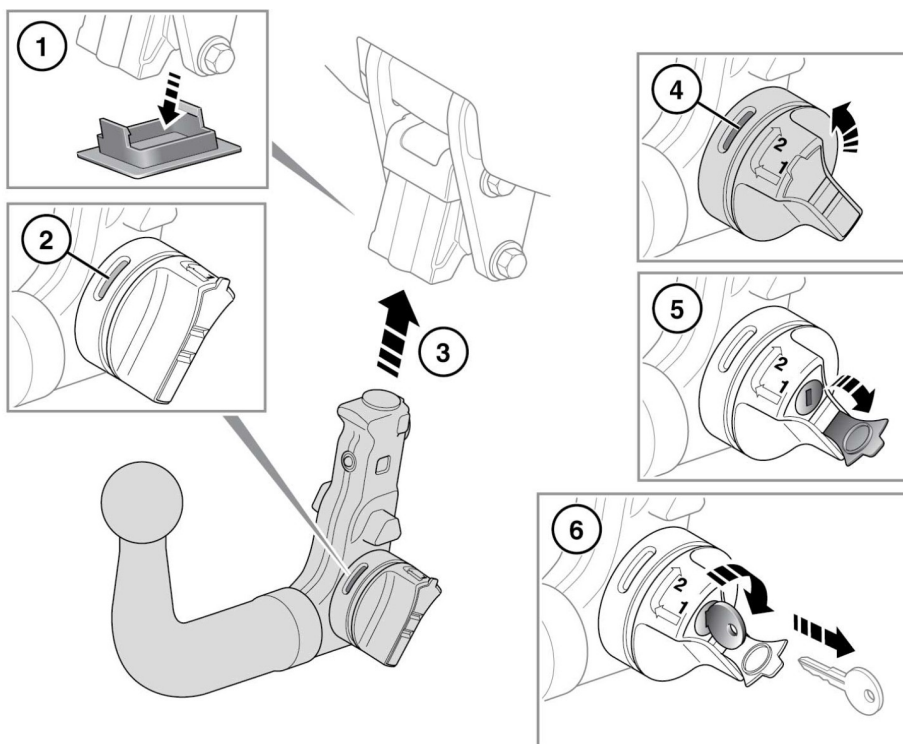


## FITTING THE DETACHABLE TOW BAR



E106119

Fit the Detachable tow bar as follows:

1. Remove the protective cover from the vehicle mounting and stow it in the tow bar stowage area.
2. The tow bar can only be installed when the locking lever is in the unlocked position (red showing).
3. Insert the tow bar into the mounting and push firmly upwards until the tow bar locks into position.
4. Turn the locking lever towards you until green is showing.

5. Remove the protective cover from the key slot.
6. Insert the key and turn it clockwise to lock the tow bar, then remove the key and refit the protective cover. Store the key in a safe place.



**Do not exceed the maximum nose weight for the detachable tow ball. See 250, WEIGHTS.**

When the detachable tow bar is not required for immediate use, it should be removed and stowed in the appropriate place.