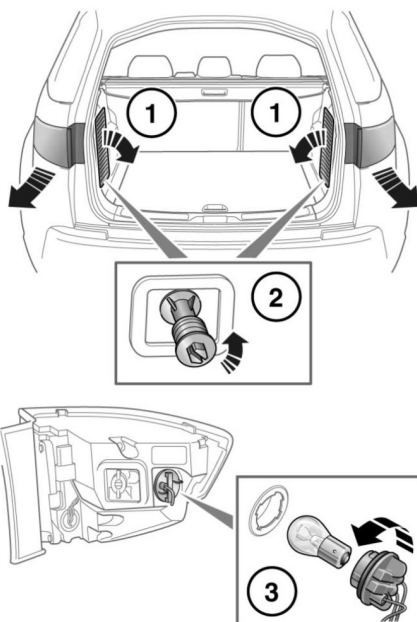


REAR DIRECTION INDICATOR AND REVERSING LAMP BULB REPLACEMENT



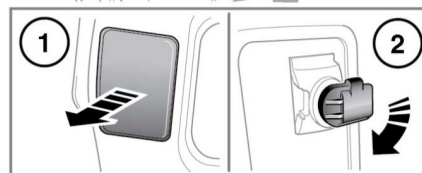
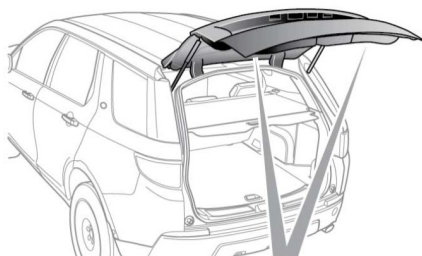
E165255

Replacing a rear direction indicator:

1. Remove the appropriate loadspace vent door.
2. Rotate the rear lamp's retaining screw counter-clockwise, until fully released and then remove. This allows the rear lamp unit to be withdrawn.
3. At the back of the rear lamp unit, rotate the bulb holder counter-clockwise and pull to access the indicator bulb.

Reverse the removal procedure to install a bulb holder/bulb unit.

Note: Note the orientation of any removed components to aid refitting.



E165256

Replacing a reversing lamp bulb:

1. Remove the appropriate tailgate access door.
2. Rotate the bulb holder downwards. Pull to remove the holder from the lamp unit and access the reversing bulb.

Reverse the removal procedure to install a bulb holder/bulb unit.

Note: Note the orientation of any removed components to aid refitting.

WIPERS SERVICE POSITION

- ⚠ To avoid damage to the bonnet, do not lift the wiper blades when they are in the normal parked position.
- ⚠ When replacing the wiper blades make sure the wiper arms do not make contact with the windscreen.

Before changing a front wiper blade, the wiper arms must be set in the 'service' position as follows:

Note: The Smart key must remain in the vehicle while the wiper blades are being renewed.

1. Make sure the ignition is turned off.