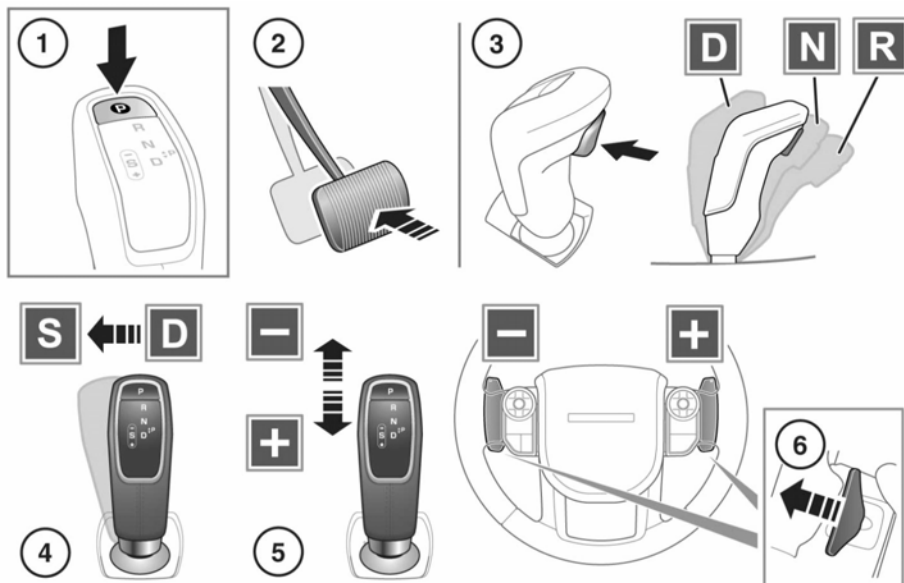


## AUTOMATIC TRANSMISSION



E151877

The gear selector status displays in the Message centre. See **44, INSTRUMENT PANEL**. Also, the appropriate LED indicator, on top of the gear selector, will illuminate to confirm selection.



**Park (P) should only be engaged when the vehicle is stationary. If any other gear position is selected while the vehicle is stationary, the vehicle can move unexpectedly, which may result in serious injury or death. Always make sure that the Electric parking brake is applied after engaging Park (P).**



Never select Park (P) while the vehicle is in motion. Doing so can result in serious transmission damage.

**Note:** Park (P) cannot be selected by manually moving the gear selector.

1. Press the park button to select Park (P). The park button LED indicator lamp will illuminate to confirm.

**Note:** Park (P) can be selected from any gear selector position.

Select Park (P) before switching the engine off.

**Note:** If the engine is switched off with Neutral (N) selected, the system will wait for 10 minutes before selecting Park (P). This procedure is only to allow the vehicle to be conveyed through a car wash and should not be used for vehicle recovery purposes. See **275, TRANSPORTING THE VEHICLE**.

2. When the vehicle is stationary, press the brake pedal prior to selecting Drive (D), Neutral (N) or Reverse (R).