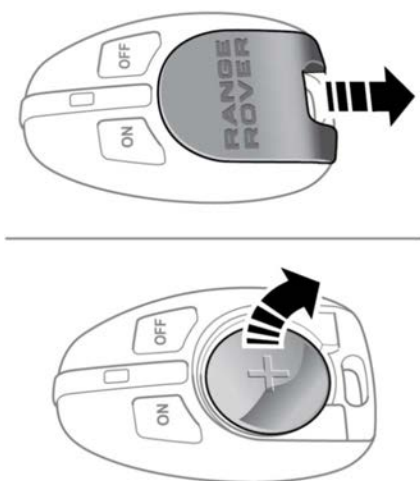


## ADDITIONAL REMOTES

Extra remote controls can be programmed to operate the heater. A maximum of 4 remote controls can be programmed to the vehicle. Contact a Dealer/Authorised Repairer to purchase extra remote controls and have them programmed to the vehicle.

## REPLACING THE REMOTE BATTERIES



E144902

With the front of the remote control facing upwards, press down on the rear of the access cover and push completely off to reveal the battery compartment. Note that the battery should be inserted with the positive side facing upwards. Remove the old battery and make sure the correct polarity is maintained. Insert a new, unused 3 volt CR2032 battery. Align and push the cover back to the original position.