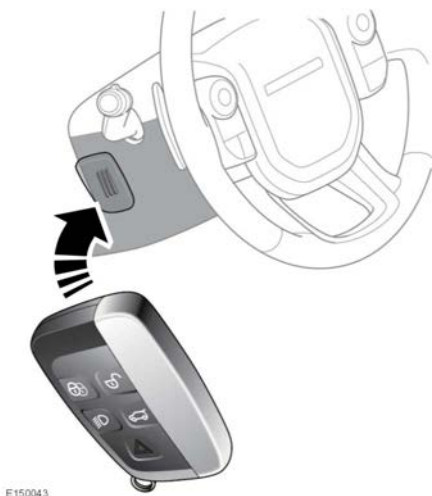


KEYLESS START BACKUP

If the vehicle has been unlocked using the emergency key blade or the Smart key is not detected by the vehicle, it will be necessary to use the Keyless start backup to disarm the alarm and start the engine.

The Keyless start backup can only be used when the message **Smart Key Not Found - Position As Shown And Press Start Button** displays in the message centre.

Electrically adjusted steering column



1. Position the Smart key flat against the side of the steering column with the buttons facing outwards.

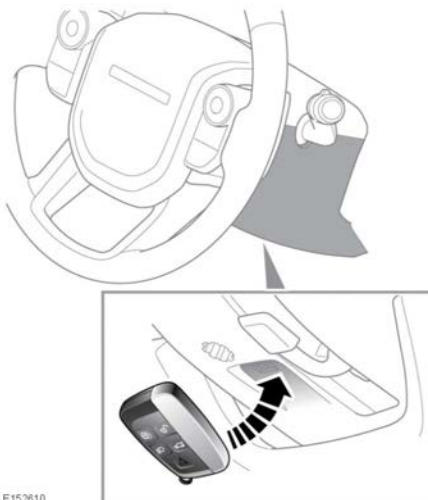
Note: The steering column has markings on the side to aid placement of the Smart key.

2. Firmly press the brake pedal.
3. Press and release the engine **START/STOP** button.

Once the engine has started, the brake pedal can be released, if it is safe to do so.

If the Smart key is not recognised or the engine still fails to start, consult a Dealer/Authorised Repairer.

Manually adjusted steering column



1. Position the Smart key against the underside of the steering column with the buttons facing downwards.

Note: The steering column has markings on the underside to aid placement of the Smart key.

2. Firmly press the brake pedal.
3. Press and release the engine **START/STOP** button.

Once the engine has started, the brake pedal can be released, if it is safe to do so.

If the Smart key is not recognised or the engine still fails to start, consult a Dealer/Authorised Repairer.