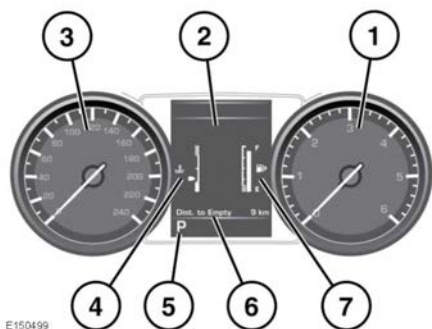
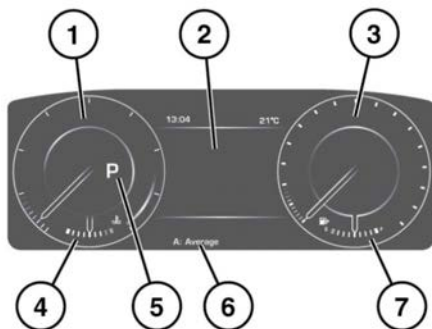


## INSTRUMENT PANEL



E150499

1. Tachometer.
2. Message centre.
3. Speedometer.
4. Temperature gauge.
5. Gear selector position display.
6. Total distance (odometer) and trip recorder.
7. Fuel gauge.

If the amber low fuel warning lamp illuminates, the vehicle should be refuelled as soon as possible. The approximate distance that can be travelled on the remaining fuel can be viewed via the Trip computer Distance to Empty function. See **47, TRIP COMPUTER**.

As a reminder for the location of the fuel filler, there is an arrow next to the fuel pump symbol pointing to the relevant side of the vehicle.

If the temperature gauge pointer moves into the red section at the top of the scale, the engine is overheating. Stop the vehicle as soon as safety permits and allow the engine to idle until the temperature reduces. If the temperature does not reduce after several minutes, switch off the engine and allow it to cool. If the problem persists, seek qualified assistance immediately.

- ! Never allow the engine to run out of fuel. The resultant misfire can seriously damage the catalytic converter.
- ! Serious engine damage can occur if the vehicle is driven while the engine is overheating.

**Note:** If engine overheating occurs, there may be a noticeable reduction in engine power and the air conditioning may cease operation. This is a normal operating strategy, to reduce load on the engine and assist with cooling.

## INSTRUMENT PANEL - HYBRID VEHICLES

The Hybrid power gauge provides information about the operation of the Hybrid system.

**Note:** The tachometer will be shown in the following conditions: A manual gear selection has been made, or the Reduced Hybrid display option has been selected.