

# Adaptive cruise control

## HINTS ON DRIVING WITH ACC

During some situations, ACC may provide the driver with an indication that intervention is required.

An audible alarm will sound, accompanied by the message **DRIVER INTERVENE** in the Message centre, if ACC detects:

- A failure has occurred while the system is active.
- That using maximum ACC braking only is not sufficient.

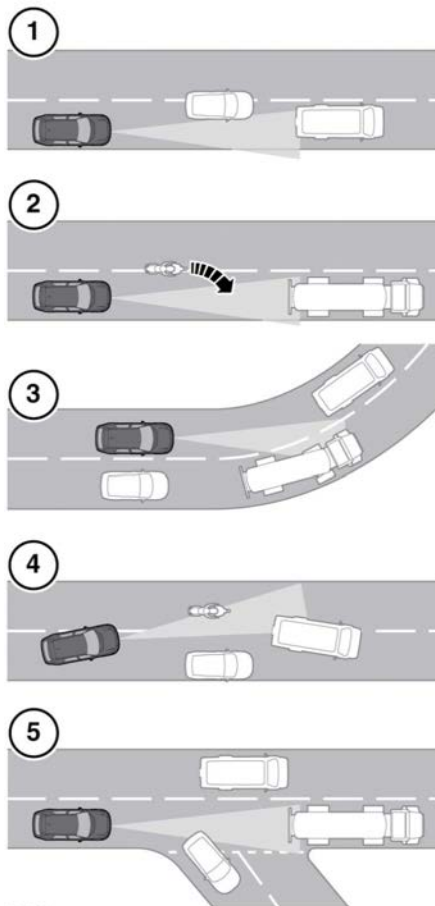
**Note:** ACC only operates when the gear selector is in Drive (D).

**Note:** When engaged, the accelerator pedal rests in the raised position. Fully release the pedal to allow normal ACC operation.

**Note:** When braking is applied by ACC, the vehicle brake lamps will illuminate.

**Note:** When Intelligent stop/start is fitted, it may operate during a Queue assist stop. Press the accelerator pedal for longer than normal, to restart the engine and move off.

## DETECTION BEAM ISSUES



E142911

### Detection issues can occur:

1. When driving on a different line to the vehicle in front.
2. When a vehicle edges into your lane. The vehicle will only be detected once it has moved fully into your lane.