

## DIESEL MISFUELLING PROTECTION DEVICE



The diesel Misfuelling protection device may not activate if an unleaded petrol fuel nozzle is only partially inserted.



When the Misfuelling protection device is activated, it may cause fuel to be discharged from the filler neck.

**Note:** It is the driver's responsibility to fill the vehicle with the correct fuel. The diesel Misfuelling protection device, only reduces the risk of filling the vehicle with the incorrect fuel.

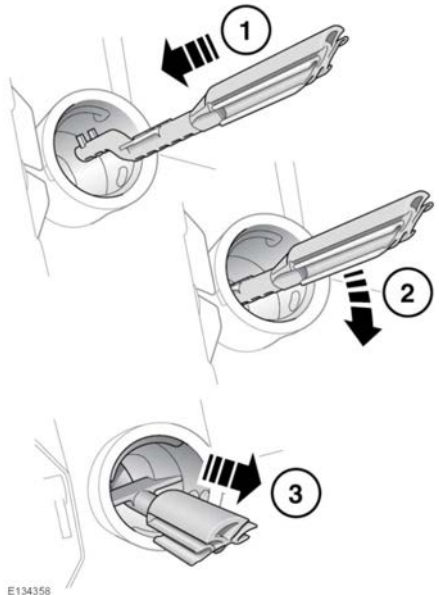
Diesel engine vehicles, in some markets, are equipped with a Misfuelling protection device, incorporated into the fuel filler neck.

If the narrow filler nozzle fitted to pumps delivering unleaded petrol is fully inserted into the filler neck, the Misfuelling protection device will activate.

**Note:** The filler spout on some fuel cans and older fuel pumps may trigger the Misfuelling protection device.

When activated, the yellow Misfuelling protection device will be visible inside the filler neck. It will prevent fuel flow into the tank. Before fuelling can continue with the correct fuel, the device will need to be reset.

The reset tool is located in the loadspace.



E134358

### Reset the Misfuelling protection device as follows:

1. Insert the reset tool (with the teeth uppermost) as far as it will go into the filler neck.
2. Locate the teeth by pushing down on the top of the reset tool.
3. With the top of the tool pressed down and the teeth engaged, slowly pull the tool out of the filler neck to reset the device.



Do not twist the device, once the teeth have engaged.

**Note:** The yellow part of the Misfuelling protection device, should no longer be visible in the filler neck.

Return the reset tool to the loadspace.