

Filling station pumps are equipped with automatic cut-off sensing to avoid fuel spillage. Fully insert the filler nozzle and fill the tank until the filler nozzle automatically cuts off the supply. Do not attempt to fill the tank beyond this point.

Note: Filling station pumps used for diesel commercial vehicles, deliver fuel at a higher rate than normal. The higher fill rate can cause premature cut-off and may cause fuel spillage; therefore, it is recommended that only standard light vehicle pumps are used.

WATER IN FUEL



If the warning **WATER IN FUEL SEE HANDBOOK** is displayed in the Message centre, an excessive amount of water has collected in the fuel filter bowl. Seek assistance from a Dealer/Authorised Repairer, to have the filter drained as soon as possible.

FUEL TANK CAPACITY

Avoid the risk of running out of fuel and never intentionally drive the vehicle when the fuel gauge indicates that the tank is empty. When refuelling your vehicle after the fuel gauge reads empty, you may not be able to add the fuel quantity shown below, as there will be a small reserve remaining in the tank.

Total tank capacity (usable): Litres (Gallons)	
V6 Diesel - SWB	80 (17.6)
V6 Diesel - LWB	85 (18.7)
V6 Diesel Hybrid	80 (17.6)
V8 Diesel	105 (23.1)
V6 Petrol	105 (23.1)
V8 Petrol	105 (23.1)

DIESEL MISFUELLING PROTECTION DEVICE



The diesel misfuelling protection device may not activate if an unleaded petrol fuel nozzle is only partially inserted.



When the misfuelling device is activated, it may cause fuel to be discharged from the filler neck.

Note: It is the driver's responsibility to fill the vehicle with the correct fuel. The diesel misfuel protection device only reduces the risk of filling the vehicle with the incorrect fuel.

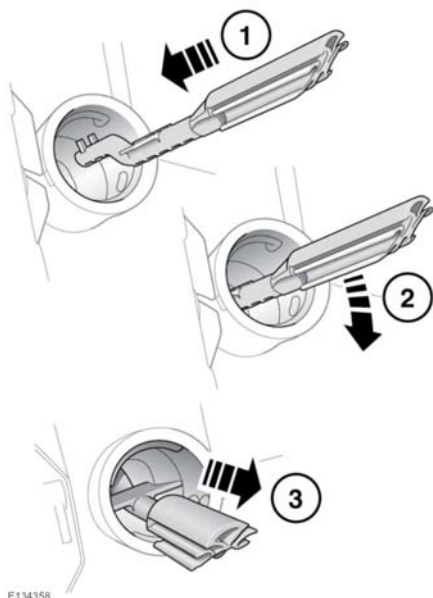
Diesel engine vehicles in some markets are equipped with a misfuelling protection device, incorporated into the fuel filler neck.

If the narrow filler nozzle fitted to pumps delivering unleaded petrol is fully inserted into the filler neck, the misfuel protection device will activate.

Note: The filler spout on some fuel cans and older fuel pumps may trigger the misfuelling device.

When activated, the yellow misfuel protector will be visible inside the filler neck. It will prevent fuel flow into the tank. Before fuelling can continue with the correct fuel, the device will need to be reset.

The reset tool is located in the loadspace.



E134358

Reset the misfuel protection device as follows:

1. Insert the reset tool (with the teeth uppermost) as far as it will go into the filler neck.
2. Locate the teeth by pushing down the top of the reset tool.
3. With the top of the tool pressed down and the teeth engaged, slowly pull the tool out of the filler neck to reset the device.

! Do not twist the device, once the teeth have engaged.

Note: The yellow part of the protection device should no longer be visible in the filler neck.

Return the reset tool to the loadspace.