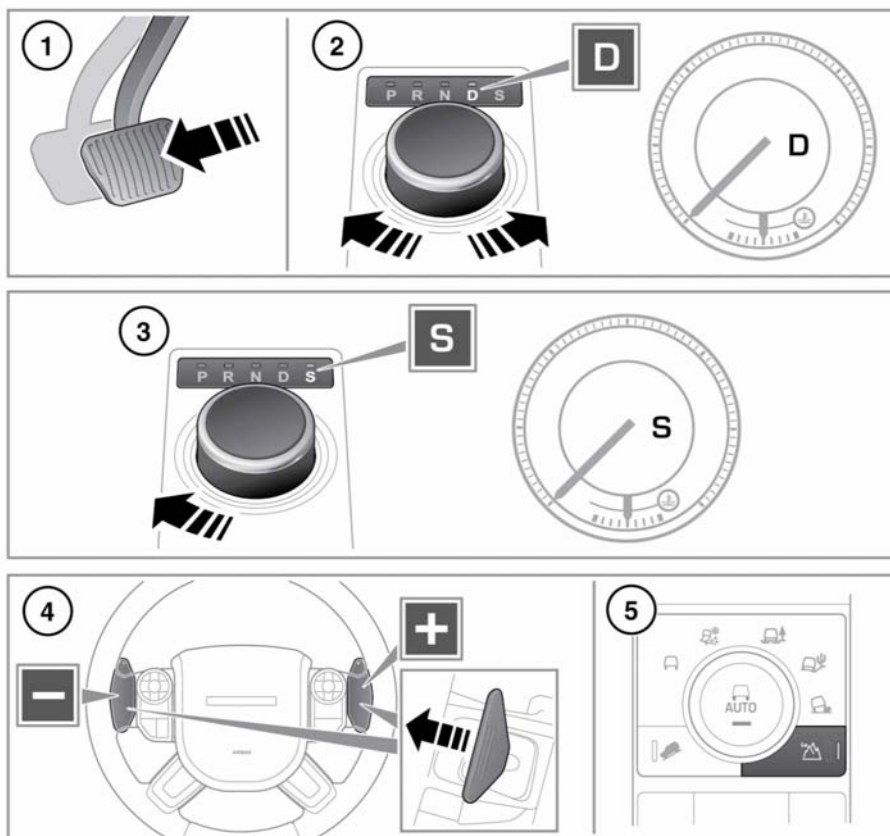


## AUTOMATIC TRANSMISSION



E140336

1. To select Drive (**D**) when the vehicle is stationary, first apply the brake pedal.
2. With the rotary selector, rotate to Drive (**D**). The paddle shifts can be used in this mode.  
**Note:** Gear selection will revert back to fully automatic **D** mode if use of the paddles is not maintained.  
To manually return to fully automatic **D** mode, pull and hold the right paddle for 2 seconds.
3. Press the selector down and rotate to **S** to select Sport (**S**) mode.  
**S** will appear in the Instrument panel and the LED, by the selector, will illuminate.
4. Manual gear selection (CommandShift™) can be used when Sport (**S**) is selected.

Use the paddles on the steering wheel for gear selection. Pull the left paddle (-) for down-shifts and the right paddle (+) for up-shifts. To return to the fully automatic Sport (**S**) mode, pull the right paddle for 2 seconds.

To return to Drive (**D**) mode, move the selector back to the **D** position.

5. Press the **Lo** button to select Low range gears.  
Low range gears should only be used in situations where low speed manoeuvring is necessary, including more extreme off-road conditions. Do not attempt to use Low range gears for normal road driving.

If the vehicle detects a transmission system fault, a warning message will be displayed in the Message centre and only limited gears may become available. Seek qualified assistance immediately.



**Park (P) should be engaged and the Electric Parking Brake (EPB) applied when the vehicle is stationary.**



**Always select P and switch off the ignition before leaving the vehicle.**



Never select **P** while the vehicle is in motion.



Never select Reverse (**R**) while the vehicle is in forward motion.



Never select a forward gear while the vehicle is in rearward motion.



Do not rev the engine, or allow it to run above normal idle speed, while selecting **D** or **R**, or while the vehicle is stationary with any gear selected.



While the transmission is set to permanent manual mode (i.e., using the paddles to change gear while in Sport (**S**) mode) and Dynamic mode is selected, transmission up-shifts are fully controlled by the driver. This means that the transmission will not change up a gear automatically, even if the engine rev limit is reached.



Do not allow the vehicle to remain stationary for a sustained period, with a gear selected and the engine running. Always select **P** or **N** if the engine is to idle for a prolonged period.

**P** should normally be selected before switching off the engine. If any other gear is selected at turn off, the selector will move to **P** before retracting into the centre console.

If the engine is switched off with **N** selected, the system will wait for 10 minutes before selecting **P**. This time delay allows the vehicle enough time to be conveyed through a carwash.

If the selector fails to rotate to **P** when the engine is switched off, when the engine is next switched on, **P** must be selected before the engine will start.

In the event of a vehicle breakdown, the transmission will automatically select **P**. This prevents the vehicle from being towed on all 4 wheels; therefore, vehicle recovery should only be undertaken by suitably qualified personnel.

If the rotary selector is obstructed, remove the obstruction and then start the engine. The selector should elevate as normal. If the selector fails to elevate, it can be used in the lowered position, but be aware that it will not automatically select **P** when the engine is switched off. **P** should be selected manually. The fault should be rectified by a Dealer/Authorised Repairer at the earliest opportunity.