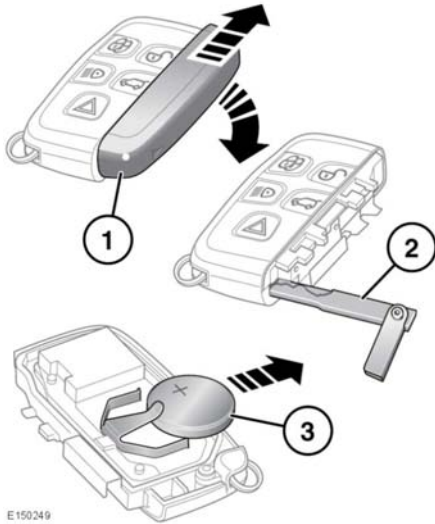


SMART KEY BATTERY REPLACEMENT

When the battery needs replacing, there will be a significant decrease in the effective range and **SMART KEY BATTERY LOW** will be displayed in the Message centre.



Battery disposal: Batteries contain harmful substances and must be disposed of correctly. Seek advice on disposal from a Dealer/Authorised Repairer and/or your local authority.



To replace the battery:

1. Remove the cover by sliding in the directions of the arrows.
2. Use the emergency key blade to separate the Smart key body.
3. Fit a new and unused CR2032 type battery (available from a Dealer/Authorised Repairer) with the positive (+) side upwards.

Note: Avoid touching the new battery.

Moisture/oil from fingers can reduce battery life and corrode the contacts.

Note: If the low battery warning does not extinguish, this indicates that the replacement battery is not in a new and unused condition.

Refit the parts in reverse order, making sure that they click securely into place.