

## MISLOCK

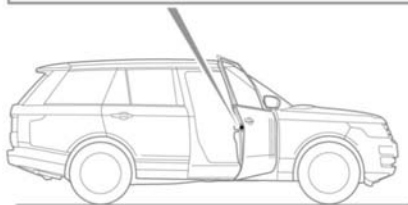
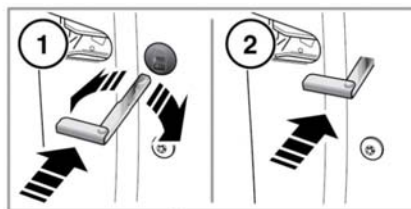
When attempting to lock the vehicle with the Smart key, if one or more of the doors, the bonnet or the tailgate is not fully closed or the ignition is ON, the vehicle will NOT lock and an audible warning will sound twice. Make sure the ignition is turned OFF and lock the vehicle again. The vehicle will NOT fully lock until all of the doors, the bonnet and the tailgate are completely closed.

**Note:** Operating the interior or exterior door handles, while attempting to unlock, lock, or change the child lock status of the vehicle (including Drive-away locking), may cause the security system to ignore any unlock, lock, or child lock requests.

## DEACTIVATING THE ALARM WHEN TRIGGERED

If the alarm has been triggered, it can be deactivated by pressing the Smart key unlock button, or by positioning the Smart key against the steering column and pressing the engine **START/STOP** button. See **119, KEYLESS START BACKUP**.

## EMERGENCY LOCKING



E 145208

In the event of the battery discharging or a fault with the Keyless locking system, each door must be locked manually.

**Note:** Do not leave the emergency key blade in the vehicle at any point during the emergency locking procedure.

1. Open the door and locate the emergency lock access cover. Using the emergency key blade (see **4, UNLOCKING THE VEHICLE**) rotate the cover to release it from the door. Remove the cover and store it safely.
2. Insert the emergency key blade firmly into the emergency lock.  
The emergency key blade can now be removed.
3. Refit the emergency lock access cover and rotate it clockwise to secure it firmly.
4. Close the door and check to make sure the door is locked.  
Repeat the procedure for all other unlocked doors.