

Object detection while closing: If an object is detected that would interfere with the tailgate closing, tailgate movement will stop and then reverse to the fully open position. An audible warning will be given to indicate a mislock. Remove any obstructions and press the tailgate close button again to close.

## TAILGATE OPENING HEIGHT

The maximum opening height can be set as required. This is useful in parking areas with low ceiling heights or just for ease of use.

1. Open the tailgate to the position which you want to set as the maximum height. Press any tailgate control to stop movement at the required position. Final position can be achieved manually if required.
2. Make sure the tailgate is stationary for at least 3 seconds.
3. Press and hold the tailgate close switch for 10 seconds to set the maximum opening height.
4. Close the tailgate, then open again to check that it opens to the set height.

**Note:** If, after performing part 3 of the process the tailgate closes automatically, the required height has not been set. Repeat the process making sure that all steps are adhered to.

To reset the maximum opening height, repeat the process, but when the tailgate reaches its current set height, manually move it to the fully open position before pressing and holding the button.

The powered tailgate may lose its position memory if there are multiple object detections or if the battery voltage is low. Powered operation may be inhibited.

To reset the tailgate:

1. Manually close the tailgate.
2. Press a release switch.

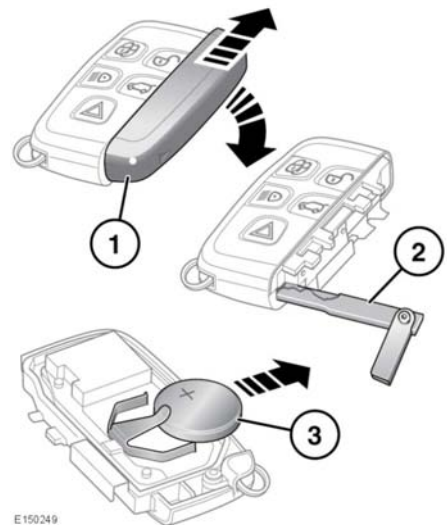
3. Allow the tailgate to power fully open or to the previously set position.
4. Press and release the close switch.
5. Allow the tailgate to power close fully. The tailgate programmed memory will now be restored.

## DRIVE-AWAY LOCKING

Drive-away locking automatically locks all doors at a set speed when the vehicle is in motion. This feature can be enabled/disabled via Drive-away locking in the Vehicle Settings menu. See **47, INSTRUMENT PANEL MENU**.

## SMART KEY BATTERY REPLACEMENT

When the battery needs replacing, there will be a significant decrease in the effective range and the message **SMART KEY BATTERY LOW** will be displayed in the Message center.



E150249

To replace the battery:

1. Remove the cover by sliding in the directions of the arrows.