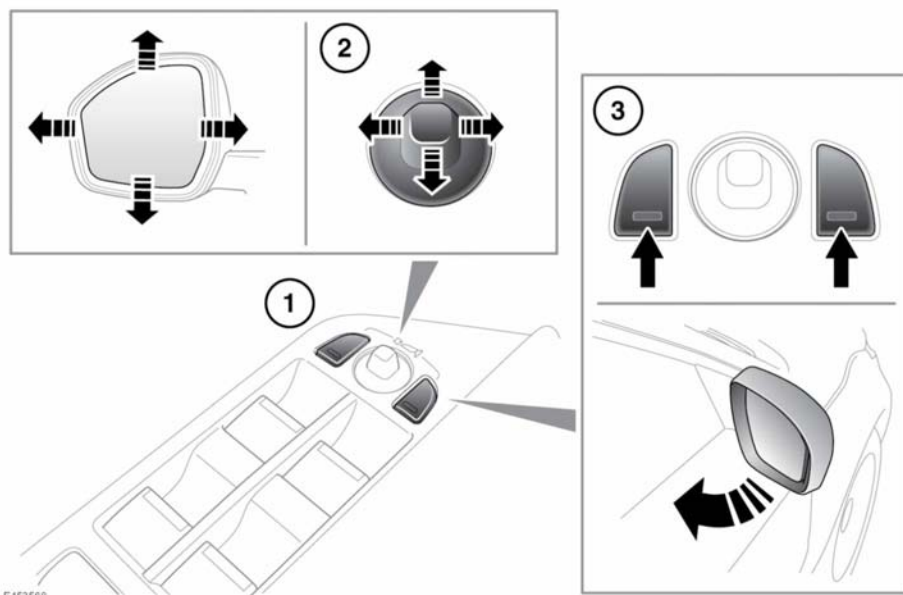


## EXTERIOR MIRRORS



E 153568

1. Mirror selector switches: Press to select the left or right mirror.
2. Mirror adjustment switch: Move up/down/left or right to adjust the mirror glass position.
3. Press both mirror selector switches together to fold/unfold the mirrors (power-fold option).

The mirrors can be adjusted and folded when the ignition is on and for up to 5 minutes after the ignition is switched off, provided the driver's door is not opened.

**Note:** Power-fold will operate only if the vehicle's speed is below 20 km/h (12 mph).

**Note:** The rear view door mirror heaters operate automatically according to the external temperature and windscreen wiper operation.

**Note:** An amount of knock protection is designed into the door mirrors. If a mirror is accidentally knocked inwards or manually folded inwards, the mirror head will be disengaged from the folding mechanism. To re-engage the mechanism, fold then unfold the mirror using the switch.

**Note:** A thermal cut-out will temporarily disable the power-fold feature if the switches are operated repeatedly.



The mirrors can be configured by a Dealer/Authorised Repairer to automatically fold when the vehicle is locked, and unfold when it is unlocked.

**Note:** If the mirrors were folded using the switches, they will not unfold when the vehicle is unlocked.