

USING CRUISE CONTROL

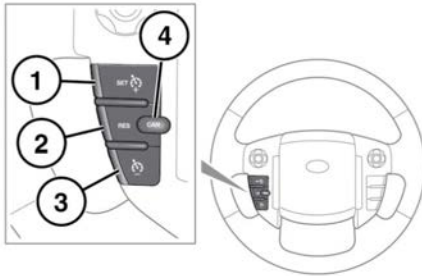


In certain conditions, such as a steep gradient, the vehicle's speed may exceed the set cruising speed. This is because engine braking is unable to maintain or reduce the vehicle's speed. Driver intervention may be required.

Note: Cruise control is not available when using Hill Descent Control (HDC) or when a Terrain response special program has been selected, except for the Grass-Gravel-Snow (GGS) program.

Note: Do not use Cruise control when driving off-road.

Note: Do not use Cruise control with Manual/Sport (M/S) mode selected.



E145748

1. **SET+:** Press to set the speed or to increase the set speed. The Cruise control warning lamp will illuminate to confirm that Cruise control is operational. See 37, **CRUISE CONTROL (GREEN)**.

The cruising speed can also be increased using the accelerator. When the desired speed is reached, press the button to set and maintain the new speed and then release the accelerator.

Note: Cruise control can only be engaged at speeds in excess of 30 km/h (18 mph).

Note: When setting the Cruise control to the speed limit, it is important to remember that it is possible for the vehicle's speed to increase when travelling downhill. This may result in the vehicle's speed exceeding the speed limit.

2. **RES:** Press to resume the set speed.



RES should be used only if the driver is aware of the set speed and intends to return to it.

3. Press to decrease the set speed.

4. **CAN:** Press to cancel, but retain the set speed in the memory. Cruise control will also be cancelled if the brake pedal is pressed, the gear selector is moved to Neutral (N), or if HDC is activated.

The system is operated by controls mounted on the steering wheel. The driver can also intervene, at any time, by use of the brake or accelerator pedals.

Note: If the accelerator pedal is pressed for more than 5 minutes, Cruise control will be cancelled.