



**Disconnect:** Use to end or reject a call.



**No phone connected.**



**Phone signal strength indicator.**



**Phone battery level indicator.**



**Bluetooth:** Indicates that a **Bluetooth®** wireless technology device is connected.



**Tick:** Indicates that a **Bluetooth®** wireless technology device is paired.



**Voicemail:** Press and hold to dial the stored voicemail number.

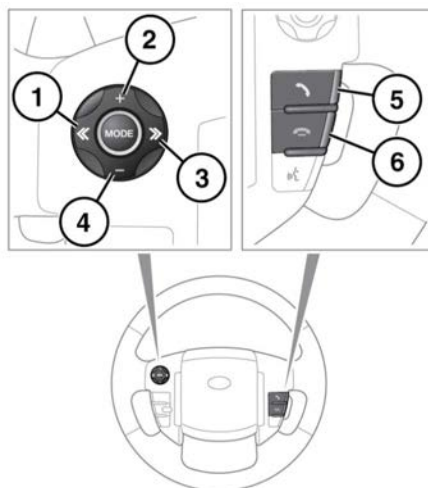


**Scroll bar up arrow:** Use to scroll up lists of detected phones, calls or phonebook entries.



**Scroll bar down arrow:** Use to scroll down lists of detected phones, calls or phonebook entries.

## STEERING WHEEL CONTROLS



E135926

1. Press to scroll back through received calls, the Last 10 list and finally to exit the list.
2. Increase the volume when in a call, scroll up a displayed list or number listed for a stored contact.
3. Press to scroll to the Last 10 list and received calls.
4. Decrease the volume when in a call, or scroll down a displayed list or number listed for a stored contact.
5. Press to answer an incoming call. Press and release to dial a number/contact. Press and release to access the Last 10 dialled list. Press and hold to access phonebook list view.
6. Press to end a call or to reject an incoming call.

**Note:** When scrolling through a phonebook or the Last 10 list, each contact is also displayed in the Message centre.