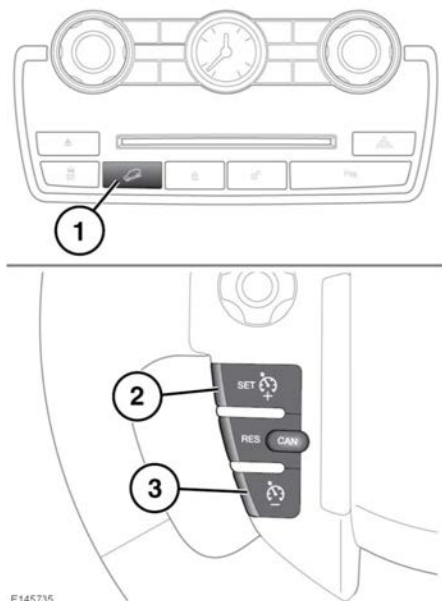


Hill descent control (HDC)

SELECTING HDC



Hill Descent Control (HDC) is designed to restrict vehicle speed to a set limit when travelling downhill.

1. Press to switch HDC on and off.
2. Press to increase the set speed.
3. Press to decrease the set speed.

HDC can be selected at speeds below 80 km/h (50 mph).

Manual transmission: HDC can be used in first or Reverse (R) gears.

Automatic transmission: HDC can be used in Drive (D), R or CommandShift 1. When in D, the vehicle will select the most appropriate gear.

Note: HDC is automatically selected by some of the Terrain response special programs.

To select HDC, press and release the HDC on/off switch (1).

If the HDC warning lamp flashes, See 37, **HILL DESCENT CONTROL (GREEN)**, HDC has been selected but is not operating. This is caused by the system's operating conditions not being met (for example, the vehicle's speed is too high).

If HDC is deselected while operating, the warning lamp will flash, See 37, **HILL DESCENT CONTROL (GREEN)**, and the system will fade out, allowing the vehicle's speed to gradually increase.

If the vehicle's speed exceeds 80 km/h (50 mph), HDC will disengage and the HDC indicator will extinguish.

Note: HDC is automatically deselected if the ignition is switched off for more than 6 hours.

HDC OPERATION

With HDC engaged, the speed of descent can be altered using the Cruise control steering wheel switches, as follows:

- To increase speed, press and hold the + switch (2) until the desired speed is achieved.
- To decrease speed, press and hold the - switch (3) until the desired speed is achieved.

When the switch is released, the selected speed will be maintained.

To increase or decrease speed gradually, tap the + or - switch as required. Each tap of the switch will increase/decrease the speed in increments/decrements of 0.5 km/h (0.3 mph).

The accelerator pedal can also be used to increase speed, up to the threshold in each gear.

Note: Each gear has a predetermined minimum speed.

Descent speed will only increase on a slope steep enough to provide additional momentum; therefore, use of the + switch on a gentle slope may not increase the speed.