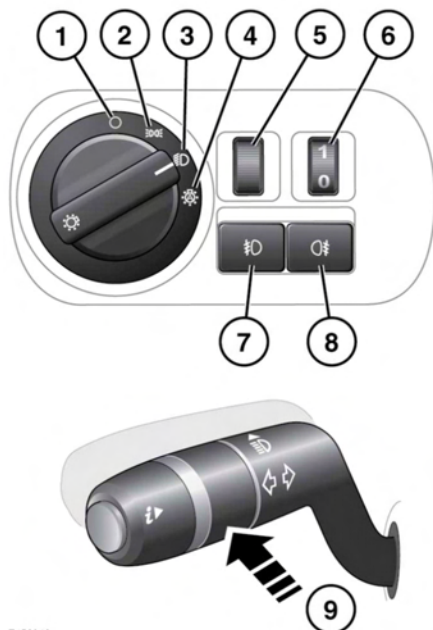


## LIGHTING CONTROL



E158948

1. Headlamps/side lamps off.
2. Side lamps on.
3. Low beam headlamps on.
4. Autolamps on: With the switch in this position and the ignition on, the side lamps, low beam headlamps and number plate lamps illuminate automatically when the ambient light level is low. High beam assist and Headlamp courtesy delay may also be activated (see below).
5. Dimmer control.
6. Vehicles with Halogen headlamps only: Headlamps height adjuster.
7. Front fog lamps on/off: When the front fog lamps are on, the front fog lamp warning lamp will illuminate.
8. Rear fog lamps on/off: When the rear fog lamps are on, the rear fog lamp warning lamp will illuminate.
9. High beam on/off/flash: When low beam headlamps are switched on, push the lighting control to change to high beam (the high beam warning lamp will illuminate). To flash the headlamps at anytime, briefly pull the lighting control and release it.

**Note:** Do not use high beam where it may dazzle other road users.

## DAYTIME RUNNING LAMPS

With the lighting switch in the Off/Auto position, the Daytime running lamps will switch on automatically under the following conditions:

- The engine is running.
- The gear selector is out of Park (P).
- The Electric Parking Brake (EPB) is not applied (is released) - market dependent.

Unless required or prohibited by law, the Daytime running lamps can be disabled or enabled. To disable or enable the Daytime running lamps, carry out the following procedure:

**Note:** In order to be successful, the procedure detailed below must be completed within 20 seconds.

- Make sure the vehicle's ignition is switched off, and the lighting switch is in the Off position (1).
- Switch the vehicle's ignition on. See **89, SWITCHING ON THE IGNITION**.
- Turn the lighting switch to the Low beam headlamps on position (3).
- Turn the lighting switch back to the Off position (1).
- Press and hold the rear fog lamp switch (8) for more than 2 seconds.