







## FUEL FILLER

-  **When refuelling, make sure that all of the windows, doors, and the sunroof are fully closed, particularly if young children or animals are in the vehicle.**
-  **Do not attempt to fill the tank to its maximum capacity. If the vehicle is to be parked on a slope, in direct sunlight, or high ambient temperature, expansion of the fuel could cause spillage.**
-  **Do not operate the auxiliary heater when refuelling the vehicle. Doing so may cause fuel vapours to combust causing a fire/explosion.**
-  Check the fuel pump information carefully, to make sure that you are putting the correct fuel into the vehicle.
-  If the vehicle is filled with incorrect fuel, it is essential that you seek qualified assistance before you start the engine.

Filling station pumps are equipped with automatic cut-off sensing to avoid fuel spillage. Fill the tank until the filler nozzle automatically cuts off the supply. Do not attempt to fill the tank beyond this point.

**Note:** *Filling station pumps used for diesel commercial vehicles deliver fuel at a higher rate than normal. The higher fill rate can cause premature cut-off and may cause fuel spillage; therefore, it is recommended that only standard light vehicle pumps are used.*

## WATER IN FUEL


-  If the warning **WATER IN FUEL SEE HANDBOOK** is displayed in the Message centre, an excessive amount of water has collected in the fuel filter bowl. Seek assistance from a Dealer/Authorised Repairer to have the filter drained as soon as possible.

## FUEL TANK CAPACITY

Avoid the risk of running out of fuel and never intentionally drive the vehicle when the fuel gauge indicates that the tank is empty. When refuelling your vehicle after the fuel gauge reads empty, you may not be able to add the fuel quantity shown below, as there will be a small reserve remaining in the tank.

Total tank capacity (usable):	
Petrol engines	86.3 litres (19 gallons)
Diesel engines	82.3 litres (18.1 gallons)

## DIESEL MISFUELLING PROTECTION DEVICE

-  **When the misfuelling device is activated, it may cause fuel to be discharged from the filler neck.**

**Note:** *It is the driver's responsibility to fill the vehicle with the correct fuel. The diesel misfuel protection device only reduces the risk of filling the vehicle with the incorrect fuel.*

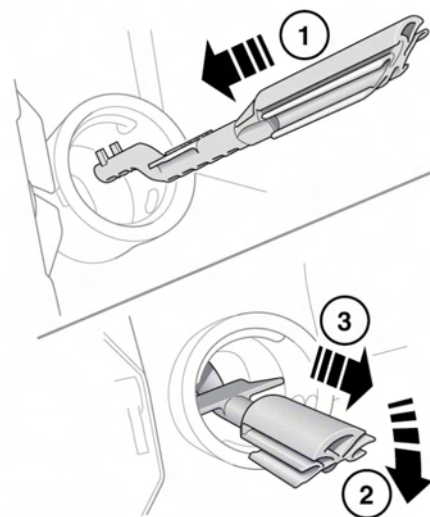
Diesel engine vehicles, in some markets, are equipped with a misfuelling protection device, incorporated into the fuel filler neck.

If the narrow filler nozzle fitted to pumps delivering unleaded petrol is fully inserted into the filler neck, the Misfuel protection device will activate.

**Note:** *The filler spout on some fuel cans and older fuel pumps may trigger the misfuelling device.*

When activated, the yellow misfuel protector will be visible inside the filler neck. It will prevent fuel flow into the tank. Before fuelling can continue with the correct fuel, the device will need to be reset.


The reset tool is located in the loadspace.



E132653

Reset the misfuel protection device as follows:

1. Insert the reset tool (with the teeth uppermost) as far as it will go into the filler neck.
2. Locate the teeth by pushing down the top of the reset tool.
3. With the top of the tool pressed down and the teeth engaged, slowly pull the tool out of the filler neck to reset the device.

 Do not twist the device, once the teeth have engaged.

**Note:** The yellow part of the protection device should no longer be visible in the filler neck.

Return the reset tool to the loadspace.