



The Smart key may not be detected if it is placed within a metal container, or if it is shielded by a device with a back-lit LCD screen such as a smart phone, laptop (including when inside a laptop bag), games console, etc. Keep the Smart key clear of such devices when attempting Keyless entry or Keyless starting.

Keyless entry allows the vehicle to be unlocked or disarmed, simply by operating any door handle. For Keyless entry to activate, the Smart key must be within 1.0 m (3 feet) of the door handle when it is operated. When Keyless entry operates, the alarm will be disarmed and the doors unlocked according to the current security setting (Single or Multi-point entry). The hazard warning lamps will flash twice as confirmation (in some markets, an audible warning will sound twice).

Note: The Smart key needs only to be on the driver's person, or in a non-metallic bag or briefcase. It does not need to be exposed or handled.

Note: If Single-point entry is the current security setting, and a door other than the driver's door is opened first, the vehicle will behave as if Multi-point entry is active (i.e., all of the doors will unlock).

STEERING COLUMN LOCK

Your vehicle is fitted with an electronic Steering column lock. The column unlocks when a Smart key is detected inside the vehicle.

If any malfunction of the Steering column lock occurs, **STEERING COLUMN LOCKED** will be displayed in the Message centre. If this occurs:

1. Lock and then unlock the vehicle using the Smart key.

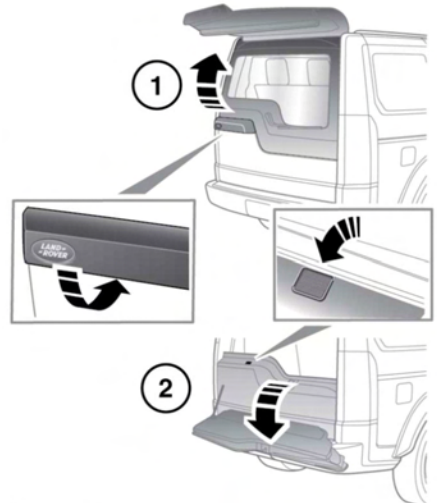
2. Try again to unlock the Steering column lock, by turning the steering wheel gently to the left and right while locking and then unlocking the vehicle using the Smart key.
3. If the problem persists, seek qualified assistance immediately.

DRIVE-AWAY LOCKING

Drive-away locking automatically locks all of the doors when the vehicle is in motion. This feature can be enabled/disabled via the **Vehicle Set-up** menu. See **40, INSTRUMENT PANEL MENU**.

Note: Pressing the lock or unlock button on the Smart key will override Drive-away locking for the current journey.

OPENING AND CLOSING THE TAILGATE



E155546