

If the vehicle does run out of fuel, a minimum of 4 litres (0.9 gallons) will be required to restart the engine. The vehicle should be left with the ignition on for 5 minutes after refuelling, before attempting to restart the engine. The vehicle will need to be driven 1.6 - 5 km (1 - 3 miles) in order to reset the engine management and monitoring systems.

**Note:** If the vehicle does run out of fuel, seeking qualified assistance is advisable.

## Diesel engines

Vehicles with diesel engines are equipped with a system to prevent the fuel tank from emptying completely. When the fuel reaches a minimum level, the system will activate a reduced power mode (i.e., the engine will not run properly). This will be followed by the engine stopping in approximately 1.6 km (1 mile).

This feature prevents the fuel system from running dry, which could cause damage to the vehicle. If the gauge indicates low fuel or the warning indicator illuminates, the fuel tank should be refuelled as soon as possible at the next filling station, with at least 4 litres (0.9 gallons) of fuel.

If the system protection function has activated, the vehicle must firstly be refuelled, then restarted using the following procedure:

1. With the brake pedal pressed, press and hold the engine **START/STOP** button and crank the engine for five seconds.
2. Release the **START/STOP** button.
3. With the brake pedal pressed, press and release the **START/STOP** button to crank the engine. The engine should start within approximately five seconds.

**Note:** If the engine does not start, pause for ten seconds with the ignition in Convenience mode, before repeating the procedure from the beginning.

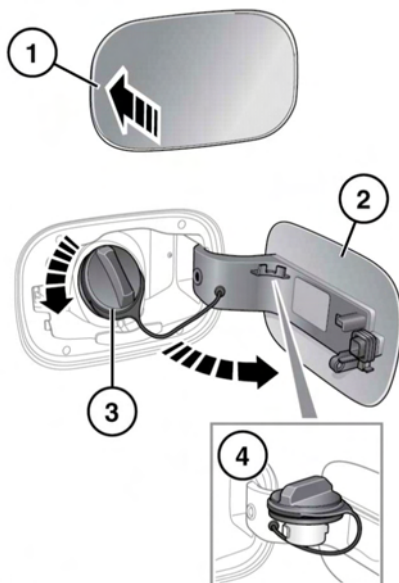


Do not crank the engine for longer than 30 seconds continuously.

## FUEL FILLER FLAP



Take note of all warnings and instructions, given on the label affixed to the inside of the filler flap.



E134864

The fuel filler flap is located on the right side of the vehicle, at the rear.

1. Make sure that the vehicle is fully unlocked, and press the left side of the flap to open.
2. Open the flap fully.
3. Twist the cap counter-clockwise to undo.
4. Use the retaining clip to keep the filler cap out of the way, while fuelling.