

TELEPHONE SYSTEM ICONS



Connect: Use to send or accept a call and access the Last 10 calls list.



Disconnect: Use to end or reject a call.



No phone connected.



Phone signal strength indicator.



Phone battery level indicator.



Bluetooth: Indicates that a **Bluetooth®** wireless technology device is connected.



Tick: Indicates that a **Bluetooth®** wireless technology device is paired.



Voicemail: Press and hold to dial the stored voicemail number.

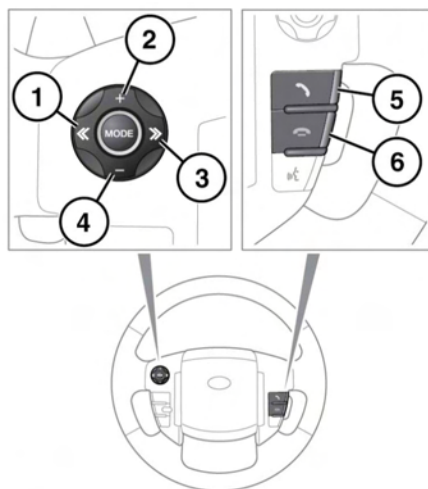


Scroll bar up arrow: Use to scroll up lists of detected phones, calls, or phonebook entries.



Scroll bar down arrow: Use to scroll down lists of detected phones, calls, or phonebook entries.

STEERING WHEEL CONTROLS



E135926

1. Press to scroll down through a displayed list.
2. Press to increase the volume when in a call.
3. Press to scroll up through a displayed list.
4. Press to decrease the volume when in a call.
5. Press to answer an incoming call. Press and release to access the Last 10 dialled list or to dial a number/contact. Press and hold to access the phonebook list view.
6. Press to end a call or to reject an incoming call.

Note: When scrolling through a phonebook or the Last 10 list, each contact is also displayed in the Message centre.

Note: In order to scroll through any Last 10 list, the 'phone' button (5) must first be pressed.

CALL VOLUME

The phone call volume is operated by the Audio system's volume control.