

## Entering the vehicle

❗ Make sure there is minimum space of 1 metre (39 inches) above and at the rear of the vehicle, before operating the tailgate. Insufficient space may result in damage to the vehicle.

❗ Do not operate the tailgate if a cycle rack is fitted to the tailgate. Remove any cycles and/or racks before operating the tailgate.

**Upper tailgate:** Unlock the vehicle and press the touchpad (1) on the underside of the exterior handle. Pull the tailgate upwards to open.

**Lower tailgate:** With the upper tailgate open, press the touchpad on the lower tailgate waist moulding (2). Lower the tailgate to open.

### SMART KEY BATTERY REPLACEMENT

When the battery needs renewing, there will be a significant decrease in the effective range and the message **SMART KEY BATTERY LOW** will be displayed in the Message centre.

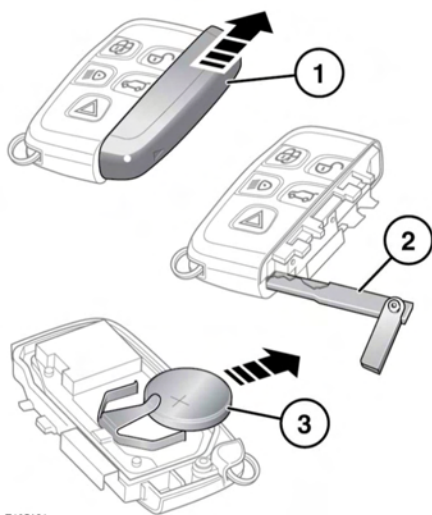
1. Slide the cover in the direction of the arrow, until a click is heard. Remove the cover.
2. Use the emergency key blade to separate the Smart key body.
3. Fit a new CR2032 type battery (available from your Dealer/Authorised Repairer), with the positive (+) side upwards.

**Note:** Avoid touching the new battery, as moisture/oil from fingers can reduce battery life and corrode the contacts.

Refit the parts in reverse order, making sure that they click securely into place.



**Battery disposal:** Used batteries must be disposed of correctly, as they contain harmful substances. Seek advice on disposal from your Dealer/Authorised Repairer and/or your local authority.



E135421

**To replace the battery:**