

Entering the vehicle

❗ Make sure there is minimum space of 1 metre (39 inches) above and at the rear of the vehicle, before operating the tailgate. Insufficient space may result in damage to the vehicle.

❗ Do not operate the tailgate if a cycle rack is fitted to the tailgate. Remove any cycles and/or racks before operating the tailgate.

Upper tailgate: Unlock the vehicle and press the touchpad (1) on the underside of the exterior handle. Pull the tailgate upwards to open.

Lower tailgate: With the upper tailgate open, press the touchpad on the lower tailgate waist moulding (2). Lower the tailgate to open.

SMART KEY BATTERY REPLACEMENT

When the battery needs renewing, there will be a significant decrease in the effective range and the message **SMART KEY BATTERY LOW** will be displayed in the Message centre.

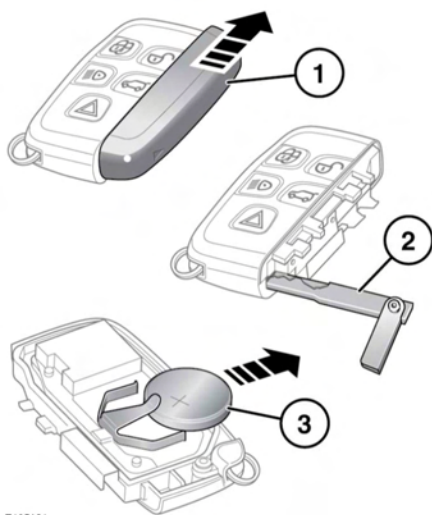
1. Slide the cover in the direction of the arrow, until a click is heard. Remove the cover.
2. Use the emergency key blade to separate the Smart key body.
3. Fit a new CR2032 type battery (available from your Dealer/Authorised Repairer), with the positive (+) side upwards.

Note: Avoid touching the new battery, as moisture/oil from fingers can reduce battery life and corrode the contacts.

Refit the parts in reverse order, making sure that they click securely into place.



Battery disposal: Used batteries must be disposed of correctly, as they contain harmful substances. Seek advice on disposal from your Dealer/Authorised Repairer and/or your local authority.



E135421

To replace the battery: